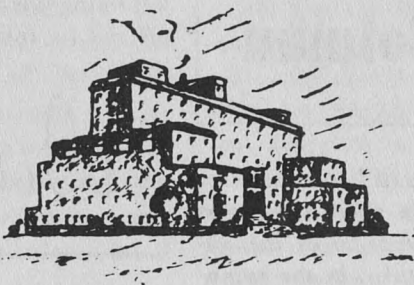


216

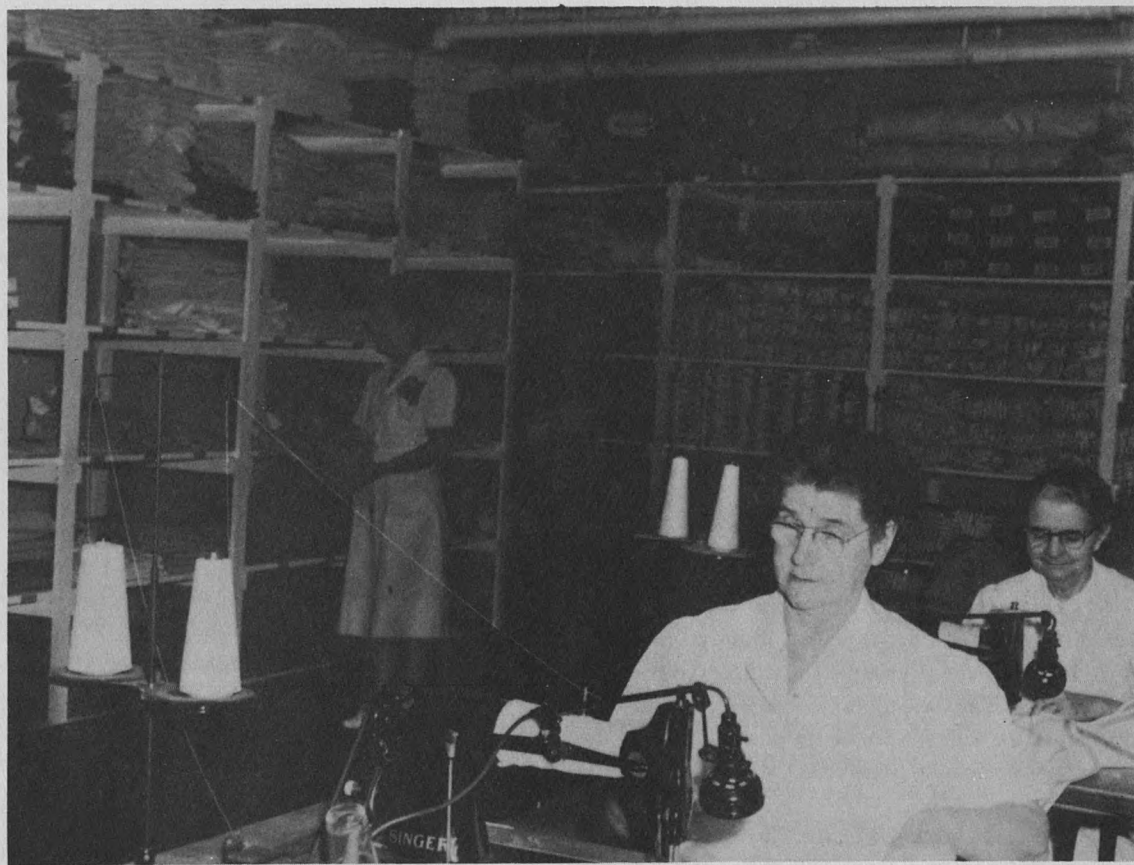


JEWISH
HOSPITAL
OF
ST. LOUIS,
216 S. Kingshighway

DIVISIONS: THE JEWISH HOSPITAL, JEWISH MEDICAL SOCIAL SERVICE BUREAU,
JEWISH SANATORIUM, MIRIAM ROSA BRY CONVALESCENT-REHABILITATION HOSPITAL

Vol. 2, Number 8-9

January - February, 1954



Seen in the Sewing Room of the Housekeeping Department are, (l. to r.), Sadie Adams, Winifred Crocker and Lydia Engert.

(See story and additional pictures on page 3.)

Executive Director's Column

When this edition of "216" reaches its readers, we shall be only a short time away from the beginning of construction of the additions to the Jewish Hospital. In the meantime, several preliminary steps have been taken to prepare the way for actual new construction.

During the last few weeks, for example, a new ambulance entrance has been erected on the Forest Park Boulevard side of the existing building. This will enable us to demolish the front entrance and the old ambulance entrance under the front steps, so that we can erect new facilities out to the building line on Kingshighway. On the Parkview Place side, a temporary service and delivery entrance has been made, to be put into use at a later date when the service alley behind the hospital is closed off temporarily during construction of the new wing along Parkview.

Four houses on Parkview Place and one on Forest Park Boulevard have been wrecked. The area occupied by these old houses will be used to construct the new wings immediately behind the present Hospital building and running eastward along Parkview Place.

Test borings have been done to furnish information about the type of foundations that will have to be prepared to support new construction. The telephone, electric, steam and other utility lines will be relocated before the major construction gets under way.

In the meantime, we are trying to squeeze as much space as possible from our present facilities. Within the last few weeks we have captured, in various parts of the building, space for a new credit office, a graphotype machine room, an electroencephalographic room, an outpatient cashier's room, two personnel offices,

an office for the executive housekeeper with adjoining linen storage and mending rooms, and offices for full-time chiefs.

David Littauer M.D.

Dr. Sherry Appointed Chief of Medicine

Dr. Sol Sherry has been appointed as the first full-time Director of the Division of Medical Services at the Hospital. Dr. Sherry, who presently is Director of the May Institute for Medical Research in Cincinnati, Ohio, will report on or before September 1, 1954.



He is a graduate of the New York University College of Medicine and served as intern and resident at Bellevue Hospital in New York City. He has been Assistant Professor of Medicine at the New York University College of Medicine, and presently holds the same rank at the College of Medicine of the University of Cincinnati.

Dr. Sherry is a member of the American Society for Clinical Investigation, the Society for Experimental Biology and Medicine, and other scientific groups. He is a member of Phi Beta Kappa, Alpha Omega Alpha, and Sigma Xi.

(Cont. Page 5)

HOUSEKEEPING DEPARTMENT ACQUIRES NEW LOOK

By Mrs. Anne Julian Vestal, Executive Housekeeper

The Housekeeping Department is the division of employees assigned to the establishment and maintenance of the clean and attractive appearance of every area of the hospital. As you learn more about this service department, you will agree that the statement is simple indeed, and that in this limited space it would be difficult to detail an adequate definition.

A long time ago, when hospitals were constructed of a relatively small number of materials, and designed to permit the limited services common to the times, it was easy to keep the buildings clean by using the services of unskilled workers who were usually under the direction of the Nursing Department. Cleaning service intimately related to patient services was performed by student nurses. As hospitals changed in design and construction of materials used, it became apparent that trained workers under the direction of a housekeeping specialist would be needed to care for the

At first the Housekeeping Department was responsible only for window-wall-and floor-care, with the addition of cleaning of patients' rooms and public rooms. Later, Housekeeping was assigned to linen distribution, mending, some sewing of new articles, and issuing of uniforms. Now the department in most hospitals has progressed to the point where maids perform check-out service even to



Carrie Brown uses one of the new Maids' Carts.



Mrs. Vestal Plans Day's Activity Schedule.

new kinds of surfaces. Nursing education changed too, and the newly established professional standards of nurses did not permit them any longer to engage in their former practices. So there came to be established on the hospital team a new organization called the Housekeeping Department; and the work of the department fell to the direction of an Executive Housekeeper.

making of empty beds and cleaning of patients' units (bedpans, basins, etc.); elevator operation is a frequent assignment; and handling of Lost and Found is commonly a Housekeeping function. At The Jewish Hospital, these duties are all performed by Housekeeping. In addition, following the trend toward a larger concept of service, Housekeeping duties have expanded here to include distribution of all soap and paper goods; replacement of bed-lamps and light bulbs; replacement of bed-bumpers and wheels; replacement of tissue-rollers and paper-towel boxes; maintenance of a salvage program. In working toward a more integrated service, Housekeeping has now added painting to its scope of duties.

(Cont. Page 7)

Auxiliary News

Gift Gallery Advisory Committee

New members to the Gift Gallery Advisory Committee have been appointed, it was announced by Mrs. Robert Aronson, president of the Auxiliary.



Mrs. Alfred Goldman

Mrs. Alfred Goldman, a vice-president of the Auxiliary, was chosen as chairman of the Gift Gallery Advisory Committee. Other appointments are: Mrs. Elmer Abramson, chairman of Gift Gallery; Mrs. Leonard Blumenthal, Mrs. Charles Fendell, Mrs. Arthur Fihn, Mrs. Alan Fleishman, Mrs. Alvin Goldstein, Mrs. Leonard Hornbein, Mrs. Melvin B. Kirstein, Mrs. William Lee, Mrs. Edwin Levis, Mrs. Earl Rosen, Mrs. Joseph Ruwitch, Mrs. Gordon Scherck, Mrs. Milard Waldheim, Mrs. William Wallbrunn, Mrs. Jay Zimmerman, Mrs. Gay Wilten Agatstein, Mrs. Edward Schweich and Mrs. Robert Aronson are ex-officio members.

The Advisory Committee, which acts as liaison between Gift Gallery and the Auxiliary, helps evaluate services and policies of the Gift Gallery.

During the past year more than 150 volunteers from the Auxiliary have worked in the Gift Gallery. They have served in many capacities including selling, publicity, art work, displays, and all the other important jobs which have kept the tiny shop humming. Hospital personnel have loyally supported Gift Gallery and leading business people in the community have given invaluable advice.

Tribute Fund Aids Research

To help meet the constant need for research in a modern hospital, the Auxiliary Tribute Fund is performing the necessary job. In addition to having purchased important equipment for Jewish Hospital research, the Auxiliary Tribute Fund will now provide the research program with \$200 a month. This amount comes from many contributors to the Tribute Fund, who send contributions in honor and in memory of their dear ones.

The co-chairmen of the Fund are Mrs. Henry Stern and Mrs. Clarence Eckert. Won't you remember the Tribute Fund today?

Membership Teas

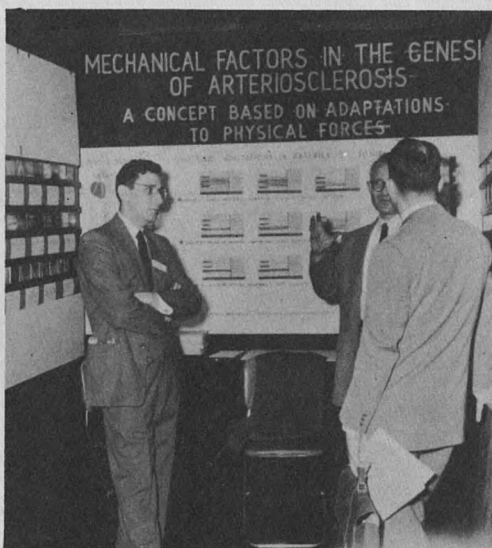
From the series of small membership teas given by the Auxiliary during the months of September and October, more than 120 new members were signed up for the Auxiliary. The teas were given in the homes of hostesses who were members of the Auxiliary. At each function, the work of the Auxiliary was explained by a trained speaker. Mrs. Leon Leonson, chairman of the Membership Committee, plans to continue the teas during the winter months.

(Cont. Page 5)

J. H. EXHIBITS AT A. M. A.

Drs. Fred Handler and Herman T. Blumenthal, Pathologists of the Jewish Hospital presented an exhibit at the recent interim meeting of the American Medical Association at Kiel Auditorium in St. Louis, dealing with mechanical factors responsible for the development of hardening of the arteries.

Time Magazine had the following to say in its issue of Dec. 14, 1953:



Drs. Handler and Blumenthal Describe their Display at A.M.A. Convention.

"Hardening of the arteries may be not one disease but many, depending on which arteries are affected, reported Dr. Herman T. Blumenthal of the Jewish Hospital in St. Louis. Arteries of the brain, heart and legs are more susceptible to hardening than those of the lungs, liver and kidneys — perhaps because the arteries are made of different types of tissue. Thus, he suggested, the site of the disease may determine its type. Metabolic changes, which have received so much attention, may be the result, rather than the cause of the aging and hardening of the arteries."

AUXILIARY NEWS (*Con't. from Page 4*)

Recreational Services

Help Ward Patients

One of the busiest and most appreciated of the volunteer services is the Recreational Services Committee which in the few short months of its existence has performed many services for patients.

Volunteers working on the wards and in Pediatrics read to patients, write letters for them, play games and instruct them in simple crafts.

More volunteers are urgently needed to work on this committee between the hours of 9:30 a.m. and 11:30 a.m. Any one interested in purchasing recreational supplies is also needed. Mrs. Fred Sale is chairman and asks that volunteers call her co-chairman, Mrs. C. Schiller, at DE 3810.

DR. SHERRY (*Con't. from Page 2*)

He has had extensive research and clinical experience in the fields of metabolism and enzymes, and is author or co-author of over twenty-five publications on these subjects.

As Director of the Division of Medical Services, Dr. Sherry will be responsible for education, research, clinical care, and administration in his specialty.

OMEGA DELTA PI DONATES CROUPETTE

A Croupette, a device for administering highly humidified oxygen to infants has been donated to the Jewish Hospital by Omega Delta Pi. This sorority, the Alumnae Chapter of a group formerly at Harris Teachers College, has been instrumental in making yearly contributions of equipment to the hospital.

THE CASE OF THE BUSY BOARD ROOM

This is the hospital – Jewish Hospital. Down the corridor to the right – the Board of Directors' Room; to the left – Gift Gallery. I'm a volunteer. My job is to report the facts concerning the Busy Board Room in December. It wasn't too hard to find the clues because we had the goods . . . good goods . . . sold fast.

Dec. 1, 10:30 a.m. – Got a call . . . Board Room full of toys . . . Mob from Gift Gallery had muscled in.

10:45 a.m. – Went to investigate . . . Merchandise all over the place . . . Noticed an aroma . . . It was coffee . . . for the customers . . . people "pouring" in . . . walking . . . running.

1:00 p.m. – A commotion . . . traffic snarled by customers in wheel chairs. When the loot looks good . . . they come. Dum da dum dum.

Dec. 5, 4:00 p.m. – A couple of informers passed the word around about the classy merchandise . . . The small fry in Pediatrics clamored for action.

Dec. 10, 11:00 a.m. – Figures clad in white were seen lurking in the doorway . . . No suspects . . . just prospects.

Dec. 15, 6:00 p.m. – We were tipped off that beautifully wrapped packages were seen leaving the scene. Upon further investigation we found hard working gals were trimming the packages . . . not the customers.

Dec. 24 – By 5:00 p.m. thanks to the purchases of the Hospital Force, the Women's Auxiliary members, and the honorable citizens of this community, the Board Room was cleaned out.

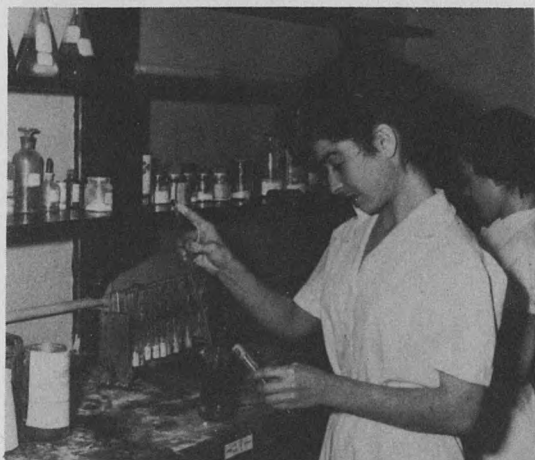
8:30 p.m. – Exhausted volunteers sent out an emergency call for stretchers and slippers.

It didn't take a 3rd degree to solve the mystery of why the Board Room was busy in December . . . Case closed.

The story you have just read is true. Only the names have been omitted. These facts are from the unofficial files of the Gift Gallery, Jewish Hospital, City of St. Louis. Dum De Dum Dum – Dum!

ESTABLISH SCHOLARSHIP FOR LABORATORY TRAINING PROGRAM

Through the good offices of Dr. J. G. Probst, Mrs. Jack London has donated funds establishing the Louis Monheimer Scholarship in Medical Technology in honor of her late husband. Mrs. London has for many years contributed funds to the hospital for the support of research. The scholarship is to be awarded to needy students who enroll in the newly established 16 months course of training in medical technology in the Division of Laboratories.



The first recipient of this award is Miss Alice Azran, shown above performing newly learned laboratory tests. Miss Azran has lived in France, French Morocco and Israel before coming to the U.S.A. a little over a year ago. She is the first student enrolled in the new laboratory training program.

SCHOOL OF NURSING APPROVED FOR 1954

The Jewish Hospital School of Nursing has received full accreditation for 1954. Miss Mildred E. Schweir of the Accrediting Service of the Noncollegiate Board of Review took "pleasure in announcing that the program is approved for accreditation in 1954 and will appear on the official list of accredited programs of the National League of Nursing."

HOUSEKEEPING (Continued from page 3)

As you walk toward the hospital, you tread on walks swept by housemen, past lawns maintained by housemen; come in through doors polished by housemen. The tidy halls result from the labors of housekeeping employees; the clean attractively decorated rooms you see are kept so by Housekeeping; you may attend a meeting at which blackboards and other appurtenances were supplied by Housekeeping; if you are an employee, you may be wearing at this moment a uniform issued to you or mended for you by Housekeeping. Patients are aware of cleaning service in their rooms, but they associate only doctors and nurses with Operating Rooms and Delivery Rooms; yet maids and housemen made their contribution there too, unheralded and unsung, but like Kilroy, they were there!

Knowing something now of the duties performed for the hospital by the Housekeeping Department, you are invited to acquaintance with some of the folk here at J. H. who serve you. In October you read a biographical sketch of Anne J. Vestal, the Executive Housekeeper. She is assisted by Louise Geiger and Barbara Doherty. In the Sewing Room Sadie Adams heads an efficient group composed of Bertha Johns, Lydia Engert, and Winifred Crocker. Mrs. Adams is also responsible for distribution of uniforms, and Lost and Found. We have three elevator operators: Marie Thomas, Edda McAway and Annie Williams, who always have a weary smile for the old saw regarding life's ups and downs.

Our housemen are 10 strong. Ollie Stone is senior houseman in point of service, having started his employment at Jewish Hospital in 1930 . . . his years are many too, and Mr. Stone works only part time now, but is to be seen daily at work in the yard and Ground Floor. The complement in this division is ever busy with wall-washing, and cleaning of floors and venetian blinds.

There are 19 maids in our day crew. These maids are relieved by 11 floats. Of these, Mrs. Rosh James has seen 10 years service at J. H., and Mrs. Isabelle McMillan has been with us 18 years!

Our furniture painters are Joseph Helberg and Charles Johnson; our wall painters the silent John Pierson, and his smiling partner Elmer Bailey.

Now that the Housekeeping Department is in its new permanent quarters in the Basement and has an organized base of operations, it is beginning to inch forward on many long range plans including an in-service training program, and the use of more labor-saving devices with maids' carts in the forefront of this program. Projects in work are: rehabilitation of patients' rooms on an optonic color system with matching drapery; painting of all patients' furniture; renovation of all mattresses with a color identification system; use of plastic mattress covers; a room control index for automatic scheduling of painting and wall-washing; design and manufacture of plastic covers for wall-fans; and removal of obsolete gas and radio fixtures.

All departments in a hospital are service departments. Housekeeping is unique in being a service department to service departments, the proverbial "gentlemen's gentleman." It, therefore, seeks to understand other departments the better to serve them; it wants, too, other departments to know Housekeeping, the better to use its services. You may look forward, then, to receiving an excerpt from the Housekeeping Department Manual which will explain and define in detail the services rendered by the Housekeeping Department, and indicate for you the manner in which their services may be requisitioned if they are not already on a daily routine basis.

We have a motto in Housekeeping at Jewish Hospital, "Cheerful, unobtrusive service, NOW."

DIVISIONAL PATTTER

CHRONIC DISEASE DIVISION

It is with deep regret that the Sanatorium Division announces the death of Dr. Josef Bergmann on December 15, 1953. Dr. Bergmann, a native of Germany, came to the United States in 1939 and served as resident physician at the Sanatorium Division from November 1, 1941 until his untimely death. He was particularly interested in cardiology and degenerative diseases, and gave many hours of devoted and conscientious service to the chronically ill patients at the Sanatorium. His son, Dr. Martin Bergmann, currently serving with the United States Army, is a member of the surgical staff of the Jewish Hospital.

Chanukah was celebrated at the Sanatorium with a party. It was an eventful party because it was the first one in which every patient, no matter how ill, was in one way or the other included. A festive air was created by blue and white decorations in both buildings and each patient was served ice cream and cake and given presents by the Auxiliary.

MIRIAM REHABILITATION DIVISION

A gift of \$250 has been received from the Shiffman Foundation for the Llewellyn Sale Library at the Miriam Hospital. Mr. Shiffman of Detroit made a similar gift last year in honor of Dr. Sale, the grant being used to establish a library of the latest and most authoritative publications in the field of rehabilitation. The library has been of great value to the entire Staff.

The past month of holidays was a happy, festive occasion for all the patients at Miriam Hospital. On December 1, the Youth Group of

Temple Israel participated in an enjoyable Chanukah service to which all patients were invited. Then, in preparation for Christmas, patients in the Occupational Therapy Department made gay window decorations. Carolers visited the Hospital, and a wonderful treat was made possible by a contribution given by Mrs. Milton Greenfield in honor of Fred Herzog's eightieth birthday. This sum was used to provide all the trimmings for a truly delicious Christmas dinner.

Mrs. Betty Lumpkin, Chief of Occupational Therapy, resigned on December 1. Mrs. Lumpkin, who has been a member of the Staff since May, 1951, plans to devote full-time to another job — that of housewife.

MEDICAL SOCIAL SERVICE DIVISION

Virginia Cavender has resigned as secretary for Home Care; she is planning to get married in the near future and will live in Chicago. Ruth Marie Carroll is the very charming new secretary. She is a native St. Louisan who has lived in Florida for the past eight years and only recently returned to this city.

Shirley Bindursky, social worker at Miriam Convalescent-Rehabilitation Hospital Division, attended the regional conference of Jewish vocational counselling agencies which recently took place here in St. Louis.

Evelyn Mann, social worker for the Home Care program, recently spoke regarding the function of the medical social worker to a group of Gray Ladies in training. The training course was sponsored by the St. Louis Chapter of the American Red Cross.

Recent Donations to Jewish Hospital

Because of the special edition on the Building Fund Campaign that appeared last month, it was not possible to list donations made in November. However, they are shown here together with those from December.

THE JEWISH HOSPITAL TRIBUTE FUND

For Research, Appliances for Alinic Patients, and Other Worthy Projects (Sponsored and operated by The Jewish Hospital Medical Center Auxiliary).

JEWISH HOSPITAL TRIBUTE FUND

Donor:	In Memory of:
Mr. & Mrs. Joseph Savan	Mollie Bloth
Mr. & Mrs. Louis Karpf	Kate Cohn
Mr. & Mrs. Courtney Gould	"
Mr. & Mrs. David Litvag	"
Mr. & Mrs. Jack A. Cohn	"
Mr. & Mrs. Sam H. Miller	"
Mr. & Mrs. Nathan Golde	"
Mr. & Mrs. Herman Glick	"
Mr. & Mrs. Sherman Blustein	"
Mrs. Harvey Frohlichstein	Mrs. Betty L. Donen
Zelma Feldman	Pearl Feldman
Mr. & Mrs. Max R. Davidson	Jack Fishgall
Mr. & Mrs. Sherman Blustein	"
Mr. & Mrs. Sam Cohen	Max Gellman
Mr. & Mrs. Herbert Weinstock	Carl Halpern
Dr. & Mrs. H. R. Senturia	"
Mr. & Mrs. Jean B. Charak	"
Julius A. Zimmerman	William Hearst
Mr. & Mrs. Louis Karpf	The Yahrzeit of George, Adela and Maurice Karpf
Mr. & Mrs. Louis Karpf	The Yahrzeit of Meyer N. Green
Mr. & Mrs. Harry Quicksilver	Rose Koplick
Miss Kate Harris	Mrs. Kuesel
Miss Ruth Werner	"
Mr. & Mrs. David Wohl	Emil Lasker
Mr. & Mrs. Sydney Shoenberg	Roy K. Lockhart
Mr. & Mrs. Louis Tiger	"
Mr. & Mrs. Max Stone	"
Mr. & Mrs. David Wohl	"
Mr. & Mrs. Richard K. Weil	"
Mr. & Mrs. Louis Rothschild	"
Mrs. Fred A. Fligman	"
Marion McCarthy	"
Mr. & Mrs. C. D. Pareira	"
Mrs. Harry Sandperl	"
Mrs. Sanford Jacobs	"
Mrs. Julius Glaser	"
Dr. & Mrs. Llewellyn Sale	"
Mr. & Mrs. Gordon Scherck	"
Mr. & Mrs. Harry Franc Jr.	"
Mrs. Harry Franc Sr.	"
Miss Ida Rosenblatt	"
Mrs. Aaron S. Rauh	"
Mr. & Mrs. Henry H. Stern	"
Mr. & Mrs. Millard A. Waldheim	"
Mr. & Mrs. Al Felberbaum	Jaelyn Sue Margulis
Mr. & Mrs. Paul R. Felberbaum	"
Mr. & Mrs. Sherman Blustein	"
Mr. & Mrs. Nathan Golde	Charles H. Marmor
Mrs. Samuel M. Friedman	"
Mr. & Mrs. David Wohl	Erna May
Dr. & Mrs. Harold Scheff	"
Mr. & Mrs. Alex A. Freund	Miss Messman
Mrs. Sam Milton	Tessie Orchard
Mrs. Charles C. Pastel	Charles C. Pastel
Mr. & Mrs. Joseph Savan	Clara Richman
Mr. & Mrs. Sam Lewin	David Schneider
Mr. & Mrs. Louis Karpf	Ida Schneider

THE JEWISH HOSPITAL TRIBUTE FUND

Donor:	In Memory of:
Mrs. Esther C. Baron	David Schwartz
Mr. & Mrs. Samuel B. Edison	Mrs. J. Segal
Mr. & Mrs. M. Flotken	Morris Sokolik
Mr. & Mrs. Paul Putzel	Karl Vetsburg
Mr. & Mrs. Harry Milton	Hyman E. Watell
Mrs. Edward S. Block	"
Mr. & Mrs. Hubert C. Moog	"
Mr. & Mrs. Harry Myers	"
Mr. & Mrs. Nathan Rosenthal	"
Mrs. Albert L. Goodman	"
Mr. & Mrs. Harry Steiner Jr.	"
Salesmen Friends at Elder Mfg. Co.	"
Mr. & Mrs. William H. Schield	"
Mr. & Mrs. Bernard Mellitz	"
Mr. & Mrs. H. S. Iglauer	Mrs. Waxman
Richard B. Cronheim	Herman Wolfheim, Jr.
Sylvia Carafiol	"
Mr. & Mrs. Richard Hellman	"
Mr. & Mrs. Lawrence Steiner	"
Mr. & Mrs. Carl Lippman	"
Mr. & Mrs. Saville Mayer	"
Mrs. D. B. Goldman	"
Mrs. Simon M. Frank	"
Mr. & Mrs. Raymond M. Freed	"
Dr. & Mrs. Ben H. Senturia	"
Mr. & Mrs. Byron Kaminer	Nettie Bearman
Mr. & Mrs. E. J. Bearman	"
Mr. & Mrs. M. H. Ostfeld	Mirian Bernstein
Mr. & Mrs. Sam Bernstein	Philip Bernstein
Mr. & Mrs. Harry Esserman	Alex Brick
Mrs. Max Orenstein	"
Mr. & Mrs. Louis Karpf	Elise Basch
Mr. & Mrs. Millard A. Waldheim	Harry E. Fisher
Mr. & Mrs. Philip Marmor	"
Mr. & Mrs. Bernard B. Gross	"
Dr. & Mrs. Jacob Stolar	"
Mrs. Hilda Sale	Dr. Maurice A. Frankenthal
Miss Violet Levy	Hyman Goldman
Mrs. Elmer J. Gidlow	Kurt Gottchaux
Mr. & Mrs. Harry Myers	Anna S. Jacobs
Mr. & Mrs. Harry Milton	Gussie Jacobson
Mrs. Faye M. Tuholske	Sussman Kasten
Mr. & Mrs. Stanley Lentin	Bessie Kelsey
Dr. & Mrs. Sol Weber	Billy Keyes
Mr. & Mrs. Harry L. Franc Jr.	Elsa Kramer
Ruth, Josie and Wilma Robi	Arthur Lieber
Isidor Loeb	"
Mr. & Mrs. Louis Putzel	"
Dr. & Mrs. Llewellyn Sale	"
Mr. & Mrs. Sol Roos	"
Mrs. Harry Sandperl	"
Mrs. Sidney I. Rothschild	"
Mr. & Mrs. Leo Greenwald	"
Mr. & Mrs. Alvin D. Goldman	"
Mr. & Mrs. Leo C. Fuller	"
Mr. & Mrs. Ralph Lowenbaum	"
Mr. & Mrs. George S. Levis	Morris Markman
Mrs. Blanche Skrainka	Ethel Michaelson
Mr. & Mrs. Peter H. Husch	"
Dr. & Mrs. Joseph Gitt	"
Mr. G. L. Goldstein	"
Mr. & Mrs. Maurice B. Lasky	Dr. James H. Olson
Mr. & Mrs. Jean B. Charak	Anna Miller
Mr. & Mrs. H. S. Iglauer	"
Mr. & Mrs. Joseph L. Weiner	"
Mr. & Mrs. Sam Cohen	"
Mr. & Mrs. Meyer Marx	David Mossiker
Mr. & Mrs. Samuel B. Edison	"
Mr. & Mrs. Julius Cronheim	"
Mr. & Mrs. Louis D. Steiner	"
Mrs. Ralph Weil	"
Mr. & Mrs. J. L. Gordon	"
Mr. & Mrs. Julius Schweich	"
Mrs. Faye M. Tuholske	"
Mr. & Mrs. Jean B. Charak	Lt. Col. Lee A. Pollock

Recent Donations to Jewish Hospital

THE JEWISH HOSPITAL TRIBUTE FUND

Donors:

Mr. Edward G. Platt
 Dr. Virgil Loeb
 Dr. & Mrs. Gunter Schmidt
 Dr. Jacob Stolar
 Mr. & Mrs. Manny Schermer
 Mrs. Louis V. Gutman
 Mr. & Mrs. Sam Levin
 Mr. & Mrs. Charles Yalem
 Mr. & Mrs. Meyer Marx
 Mr. & Mrs. Herman Gittelman
 Mr. & Mrs. Meyer Frank
 Mrs. Harry Rovak
 Dr. & Mrs. William A. Marmor
 Mr. & Mrs. Alfred Stoler
 Mrs. Samuel M. Friedman
 Mr. & Mrs. Nathan Berger
 Dr. & Mrs. Gunter Schmidt
 Mr. & Mrs. Leonard Hornbein
 Mr. & Mrs. Harry Esserman
 Mr. & Mrs. Lee I. Kaufman
 Mrs. Cora F. Schoen
 Mr. & Mrs. Jean B. Charak
 Mrs. Ben Kaufman
 Mrs. Henry Freed
 Mr. & Mrs. Carl Glaser Jr.
 Mrs. Paul Putzel
 Esther L. Rennholz
 Mr. & Mrs. Arthur Scharff
 Mr. & Mrs. J. Warren Agatstein
 Dr. & Mrs. Harry Agress
 Mrs. Sol Kaiser
 Mr. & Mrs. Harry L. Franc Jr.

Mr. & Mrs. Harry Myers

Mr. & Mrs. Herman C. Seldin
 Mrs. Norman Wolff

Mr. & Mrs. Ralph Lowenbaum
 Mr. & Mrs. Benjamin Loeb
 Mr. & Mrs. Millard A. Waldheim
 Mr. & Mrs. Joseph Glaser Jr.
 Mr. & Mrs. Maurice B. Lasky

Mrs. David R. Komm

Mr. & Mrs. Lester Nieman

Mr. & Mrs. Harry Milton

Mrs. S. Inger

Mrs. David R. Komm

Mr. & Mrs. Harry Milton

Mr. & Mrs. Samuel Gans

Mrs. David R. Komm

Mrs. David R. Komm

Mrs. S. Inger

In Memory of:

Wallace Renard
 Dr. Ralph B. Rode

"

Samuel Rosenthal

"

"

"

"

"

Saul Ross

Pearl Seidel

"

Charles Sievers Sr.

Mrs. Richard Stern

Mrs. Stoller

Ethel Tucker

Henry Weil

"

"

"

"

"

"

"

Jack Wittman

Birthday of Mrs.

M. J. Ehrlich

In Honor of:

Mr. Milton Grenfield's 80th birthday

"

Mr. Theodore R. Samuel's 65th birthday

"

"

"

Mr. Louis Steinbaum's 60th birthday

Mrs. J. G. Probststein's birthday

Mr. & Mrs. Morris Kaiserman's 50th anniversary

Mr. & Mrs. Julius Schweich's 30th anniversary

Mr. & Mrs. Lester Inger's 25th anniversary

Mr. & Mrs. Harry H. Kessler's anniversary

Mr. & Mrs. Irving Rosenfeld's anniversary

Mr. & Mrs. Alan Budd Lewin's anniversary

Mr. & Mrs. Sam Koplars' anniversary

Mr. & Mrs. Charles Iken's Recovery

Mrs. Ben Goldman's recovery

THE JEWISH HOSPITAL TRIBUTE FUND

Donors:

Mr. & Mrs. Howard Nussbaum

Mrs. Harry Hochman

Miss Ida E. Rosenblatt

Mr. & Mrs. Joseph W. Lefton

Mr. & Mrs. Harry Milton

Mrs. Annette Bronson

Mrs. Rebecca Harrison

Mr. Sam C. Sachs

Mrs. Tina Auerbacher

Mrs. Alvin Bauman

Mrs. Arthur Lieber

Mr. Louis Loeb

Dr. & Mrs. Virgil Loeb

Mr. Isidor Loeb

Mr. & Mrs. Herbert N. Arnstein

Mr. & Mrs. Howard Baer

Mr. & Mrs. Julian A. Pollak

Mrs. Harry A. Gleick

Dr. & Mrs. Kurt Mansbacher

Dr. & Mrs. Hyman R. Senturia

Dr. & Mrs. Melvin B. Kirstein

Mr. & Mrs. Meyer Weil

Dr. & Mrs. B. Y. Glassberg

Dr. & Mrs. Benjamin M. Vogel

Dr. & Mrs. Ben H. Senturia

Dr. & Mrs. Gilbert N. Lassar

Mrs. Jonas Bloch

Mrs. Henry I. Cohn

Mrs. Bernie A. Ross

Mrs. Henry R. Weisels

Mr. & Mrs. Peter Husch

Mr. & Mrs. Julian B. Cohn

Mrs. William A. Sundheimer

Mrs. George Potlitzer

Mr. & Mrs. Harry Milton

Mr. & Mrs. Benjamin Shapiro

Mr. & Mrs. Bernie A. Ross

Mr. & Mrs. Julius Schweich

Mr. & Mrs. Bernie Hirsch

Mrs. I. E. Frank

Mr. & Mrs. Sherman Blustein

Edward W. Fuhrman

Sam Meisner

In Honor of:

Mrs. Nathan

Berger's

recovery

Her own

recovery

Mr. Leonard

Hornbein's

recovery

Dr. P. D.

Stahl's

recovery

Dr. Daniel

Klaff

Donation

"

"

"

"

"

"

"

"

"

"

"

"

"

"

"

"

"

"

"

"

"

"

"

"

"

"

"

"

"

"

"

"

"

"

"

"

"

"

"

"

"

"

"

"

"

"

"

"

"

"

"

"

"

"

"

Recent Donations to Jewish Hospital

THE JEWISH HOSPITAL TRIBUTE FUND

Donor:

Mrs. Ralph Sachs
Mrs. S. H. Goldman

Donation

"

DIABETES RESEARCH FUND

Donor:

Dr. & Mrs. Joseph B. Kendis

In Memory of:

Mr. James W. Stafford
Contribution
Contribution

Mr. Gilbert Zonnis

Theodore, Fanny and Nancy Finkelstein

BUILDING FUND

Donor:

Mr. & Mrs. Bernard B. Gross

In Memory of:

Herman Wolfheim, Jr.

Mr. & Mrs. Herbert S. Worth

Mrs. Elkas

Kathryn Wordhaus

Mr. & Mrs. Gaines

Mrs. A. Tuholske

Mr. & Mrs. Edward Salomon

Mr. & Mrs. Leroy Kopolow

Mr. & Mrs. Salkey

Mr. & Mrs. Felsen

Mr. & Mrs. F. N. Wolfheim

Universal Printing Co.

Mr. Edward Turner

Claire Agatstein

Mr. & Mrs. Irving Londy

Mr. Alex Grasberg

Mr. & Mrs. Robert V. Friedman

Harold & Myra Dubinsky

Mr. Ellis C. Littman

Mr. Frank E. Hurd

Mrs. Robert Rossenheim

Mr. David Alton

Mr. David Alton

Mr. David Alton & Mrs. Sam Alton

Mrs. Robert Slegman

Mr. Harry Fisher

Mr. Jacob Lewin

Mrs. Edna Rosenthal

Mr. Herman Wolfheim, Jr.

Mr. Arthur Lieber

Contribution

Mr. H. E. Watell

Herman Wolfheim, Jr.

"

"

"

"

"

"

"

"

"

"

"

"

"

"

"

"

"

"

"

"

Charles D. Welch

Mr. & Mrs. Ralph Kalish

Viola Graves

Mr. B. L. Shifrin

Mrs. R. M. Moss

Mrs. Isaac Greenfield

Mr. & Mrs. L. W. Agatstein

Julian & Birdie Samuels

Alvey Conveyor Welfare Association

Alvey Conveyor Mfg. Co. (Estimating,

Engineering, & Office Employees)

Mr. & Mrs. Clarence Mange

Mr. & Mrs. Sam Langsdorf

Clarence & Jeanette Pereira

Drapery Dept. (Lammert Furniture Co.)

Lawrence K. Roos

Mr. & Mrs. Ralph Cohen

Lester J. Hurd

Mrs. Henry Freidman

Mrs. Sidney Cook & Son

Richard J. Kline

Mr. & Mrs. Chas. W. Mintz

Mr. & Mrs. Robert S. Metzger

Mr. & Mrs. Ralph Kalish

Mr. S. C. Sachs

EQUIPMENT FUND

Donor:

The Jewish Hospital Medical Center

Auxiliary

Mrs. J. Ward

Contribution to

Eye Clinic

Ultraviolet Light

for Physical

Therapy

CANCER RESEARCH FUND

Donor:

Mr. & Mrs. William Chautin

Mrs. Geo. Gillerman

Dr. & Mrs. Joseph B. Kendis

Mr. & Mrs. Harvey M. Baier

Mr. & Mrs. Ralph Kalish

Mr. & Mrs. Wm. Ziskind

In Memory of:

Herman Wolf-

heim, Jr.

Mr. Alex Brick

Morris E.

Markman

Herman Wolf-

heim, Jr.

Mr. Alexander

Brick

Morris E.

Markman

SIDNEY I. ROTHSCHILD LIBRARY FUND

Donor:

Mr. & Mrs. Louis G. Rothschild

Mr. & Mrs. Gilbert A. Rosenthal

Mrs. Irvin Bettman, Jr.

In Memory of:

Mr. Sidney I.

Rothschild's

death

"

FRAN WEISMAN HEART FUND

Donor:

Dr. & Mrs. Roland S. Bassman

In Memory of:

Mr. Solomon

Ross

MAY FUND

Donor:

Mr. Morton J. May

Mrs. Charles Rice

Mrs. W. N. Eisendrath, Jr.

In Memory of:

Mr. Arthur Lieber

"

"

LOUIS M. MONHEIMER RESEARCH FUND

Donor:

Clara & Jack London

In Memory of:

Mr. Roy Lockhart

Donor:

Clara & Jack London

In Honor of:

Mr. Theo.

Samuels'

birthday

MIRIAM HOSPITAL SPECIAL FUND

Donor:

Mr. & Mrs. Victor Friedman

Mr. & Mrs. Elmer Abramson

Mr. & Mrs. Elmer Abramson

Mr. L. T. Arnold

Mr. & Mrs. Sig Livingston

Mr. & Mrs. Robert Weitzer

Mr. & Mrs. Willard Levy

Mr. & Mrs. John Isaacs, Jr.

Mr. & Mrs. S. J. Kiner

Mrs. Robert V. Friedman

Mr. & Mrs. Walter Sears

Mrs. Sanford Jacobs

Mr. & Mrs. Richard J. Kline

Mr. & Mrs. Lawton J. Levy

Helen & Jerry Flixner

Mr. & Mrs. Wm. Livingston

Mr. & Mrs. Bernard Greensfelder

In Memory of:

Jennie Marks

Louis Rochman

Mrs. Melvin

Dubinsky's

mother

Leonard H.

Gross

Mrs. Lena

Pfeiffer

Mrs. Ben May

Mrs. Joseph

Richman

"

"

"

"

"

"

Mr. Jack Marx

Mr. Weil

Martha K.

Greensfelder

Donor:

Mrs. Henry Littleson

Mrs. Ben Loeb

Mrs. Herman Strauss

Mr. & Mrs. Albert Aloe

In Honor of:

Miss Florence

R. Bauman's

birthday

Mrs. Louis P.

Aloe's birthday

"

"

Holiday Party A Success

On December 23 the Nurses' Residence gymnasium was aglow with holiday decorations, music and candle-lighted serving table. A party was in progress for all employees of the Jewish Hospital.

Each person received a stocking filled with articles that were supposed to appeal to the sense of humor. Egg-nog, punch, cookies, candy and nuts, prepared by the Dietary Department, were served by Department Heads. The Department Heads were distinguished as "Mine Host" with colorful aprons designed and made by the Seamstresses in The Housekeeping Department. For entertainment two very clever skits, "The Lazy Maid" and "Life's Ups and Downs" were prepared and presented by the Maids in Housekeeping. We did not know we had such talent in our hospital! Bonnie Ross,

violin, and piano supplied music for singing, listening...or dancing if they felt the urge, which some did! (Those who did not stay for the finish missed this part).

The Holiday Party Committee thanks all employees who assisted with the party, the Nurses' Residence for the decorations, the Volunteer Ladies for the agony of counting nuts, cigarettes, and trying out horns while filling the stockings, and a very special thanks to all the companies and their salesmen whose donations helped make the party possible.

Beginning with this issue, "216" will appear bi-monthly. A total of six issues will be published each year.

216

PUBLISHED IN THE INTEREST OF

THE JEWISH HOSPITAL OF ST. LOUIS

216 SOUTH KINGSHIGHWAY BOULEVARD
SAINT LOUIS 10, MISSOURI.

MAJOR B. EINSTEIN, PRESIDENT
DAVID LITTAUER, M.D.
EXECUTIVE DIRECTOR

DAVID A. GEE, EDITOR
IMOGENE LASWELL, ASSOCIATE EDITOR

CATHERINE BLOMES, ASST. EDITOR
MARJORIE BOULTON, ASST. EDITOR
PAUL R. WOZNIAK, ASST. EDITOR

LOUISE GOLMAN, DIV. EDITOR
LOUISE SCHWARTZ, DIV. EDITOR
DOROTHY MCKINLEY, DIV. EDITOR

KAY KIRSTEIN, AUXILIARY EDITOR
GUS PIROS, PHOTOGRAPHER

SEC. 34.66 P. L. & R.
U. S. POSTAGE

1½¢ PAID

ST. LOUIS, MO.
PERMIT NO. 2375