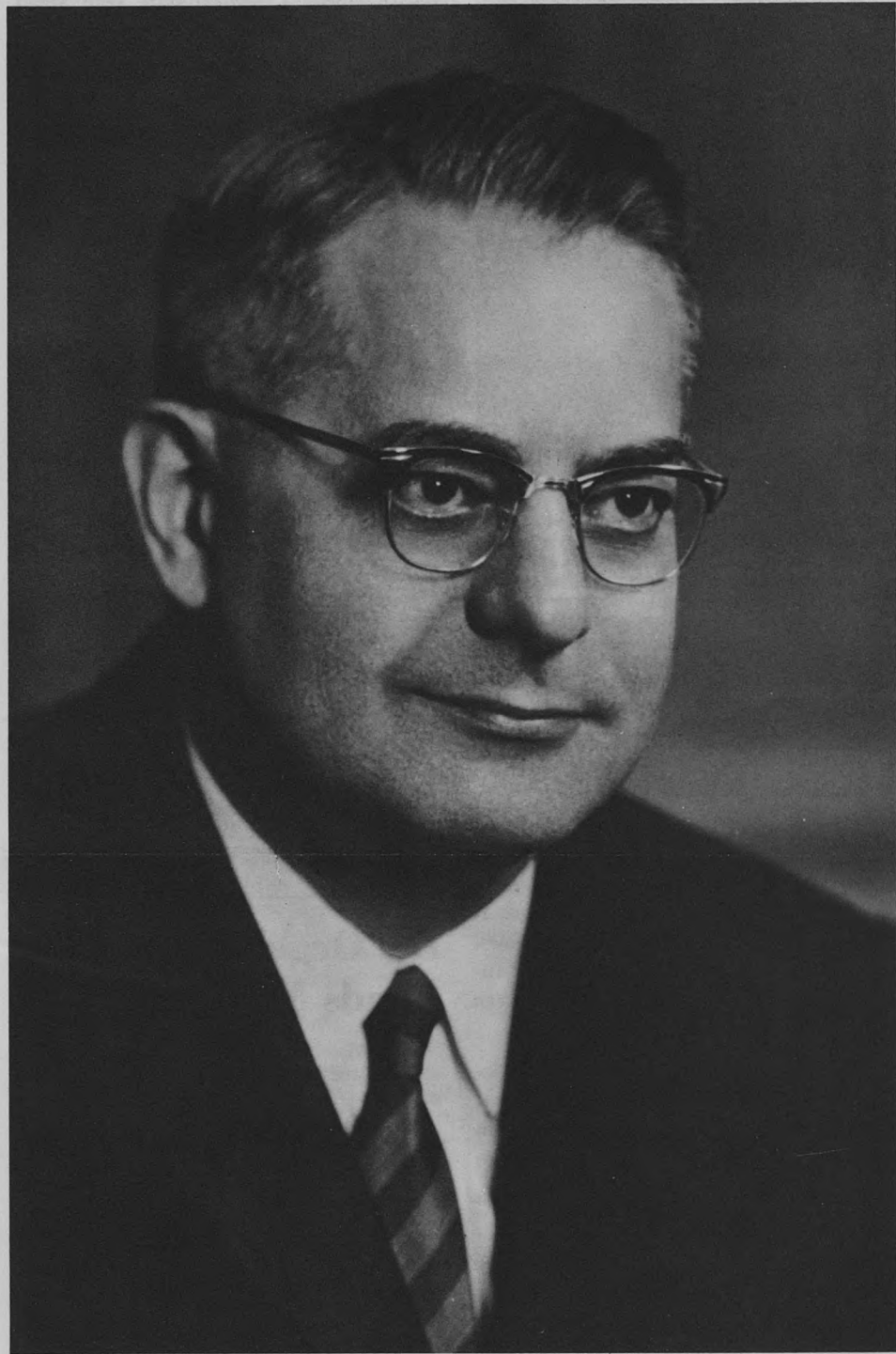


Dr. Littauer Resigns As Executive Director



DR. DAVID LITTAUER

Dr. David Littauer, executive director since 1952, has resigned to become executive director of the merged Cedars of Lebanon and Mt. Sinai Hospitals in Los Angeles. He begins his new duties September 1.

David A. Gee, associate director of the hospital since 1955, will become acting director on July 1. (See related story, page 2.)

During Dr. Littauer's 11 years here, total bed capacity has grown from 298 to 509 and yearly admissions have risen from 11,500 to 17,000 in 1962.

Dr. Littauer saw the successful completion in 1956 of a \$7,000,000 expansion campaign which made possible the six-story Mark C. Steinberg wing, with space to treat patients with long-term illnesses, as well as the Aaron Waldheim Clinics Building. Chronic disease and rehabilitation units and a division of adult psychiatry were housed in the new wing. The Ellen Steinberg Division of Child Psychiatry was opened in 1959.

Long interested in home care, Dr. Littauer was instrumental in founding the first such program in St. Louis in 1953. With its present caseload of 60 patients, it is considered a model for other institutions considering similar programs.

In 1961, Dr. Littauer, along with Albert Wessen, Ph.D., and Dr. I. J. Flance, wrote the American Hospital Association's official publication on home care. In 1962, he became project director of the Training Center for Home Care and Other Out-of-Hospital Health Services at the hospital.

In Dr. Littauer's first year at the hospital, the Jewish Hospital Auxiliary was founded. It now has 3,050 members, with 400 adult volunteers and a large group of junior volunteers. The junior volunteer or candy-stripe program, begun in 1956, was the first in St. Louis.

The Research Institute of the hospital was founded during Dr. Littauer's tenure. During the last five years, research grants to the hospital from all sources totaled \$1,500,000.

He has been the recipient or the co-recipient of five research and training grants from the U. S. government. In October, 1960, he and Nicholas J. Demer-

ath, Ph.D. of Washington University became project chairmen of the Medical Care Research Center established by a five-year \$564,518 U. S. Public Health Service grant. The *St. Louis Post-Dispatch* described the grant as "the largest ever awarded for a study of any nature in the St. Louis area."

Dr. Littauer is a past president of the Missouri Hospital Association and the hospital associations of both St. Louis and Kansas City, a member of the board of directors of the Health and Welfare Council of Metropolitan St. Louis and vice-chairman of the Council on Long-Term Care of the American Medical Association. He has served on the AHA councils of Administrative Practice and Professional Practice as well as on many AHA committees.

An author of three monographs and more than 30 articles about hospital and medical care administration and research Dr. Littauer is chairman of the board of publications of the American College of Hospital Administrators and a member of the board of editors of both *Public Health Reports* and *The Modern Hospital*.

He is an assistant professor in the course of hospital administration of the Washington University School of Medicine. He was a member of the Missouri Committee for the 1961 White House Conference on Aging.

He has lectured widely on hospital topics. His itinerary has included lectures at the International Hospital Congress in Lisbon, Portugal; Staff College in Hospital Administration, London, England, and the Program of Hospital Administration, University of Mexico.

He came here after serving six years as executive director of Menorah Medical Center in Kansas City.

Dr. Littauer received his undergraduate degree from Cornell University and his M.D. from New York University College of Medicine. He practiced internal medicine until 1941, when he entered the U. S. Army as a first lieutenant.

He left the army in 1945 as a full colonel and commander of a 400-bed evacuation hospital in the Pacific theatre of operations.



A RECENT FAREWELL PARTY FOR DR. AND MRS. LITTAUER WAS HELD IN STEINBERG AUDITORIUM. HOSPITAL DEPARTMENT HEADS, SUPERVISORS AND NURSING LEADERS GAVE DR. LITTAUER A GLOBE, MRS. LITTAUER A SILVER SERVING TRAY. THE AUXILIARY, BOARD OF DIRECTORS, MEDICAL STAFF, HOSPITAL ASSOCIATION, JEWISH FEDERATION AND MYRIAD OTHER GROUPS WITH WHOM THE LITTAUERS HAD COME IN CONTACT IN THEIR 11 ST. LOUIS YEARS FETED THEM AS THEY PREPARED TO LEAVE THE CITY.

JOHN SHOENBERG, THEN BOARD PRESIDENT, PRESENTS DR. LITTAUER A GIFT COMMEMORATING HIS TENTH YEAR AT JEWISH HOSPITAL IN 1962. WHEN DR. LITTAUER FIRST ARRIVED HERE, THE HOSPITAL HAD 298 BEDS; IT NOW HAS 509 BEDS. ANNUAL ADMISSIONS ROSE TO 17,000 IN 1962 FROM 11,500 IN 1952. HIGHLIGHTS OF DR. LITTAUER'S TENURE INCLUDED THE SUCCESSFUL COMPLETION IN 1956 OF A \$7,000,000 EXPANSION CAMPAIGN AND THE FOUNDING IN 1953 OF THE FIRST HOME CARE PROGRAM IN ST. LOUIS.



DR. LITTAUER CHATS WITH SUPERVISORY GROUP AT A 1957 DIRECTOR'S COFFEE HOUR. HE WAS A FAMILIAR FIGURE AT SERVICE AWARDS TEAS, HOLIDAY PARTIES, SEMINARS AND LECTURES, FUND RAISING MEETINGS AND OTHER HOSPITAL EVENTS.



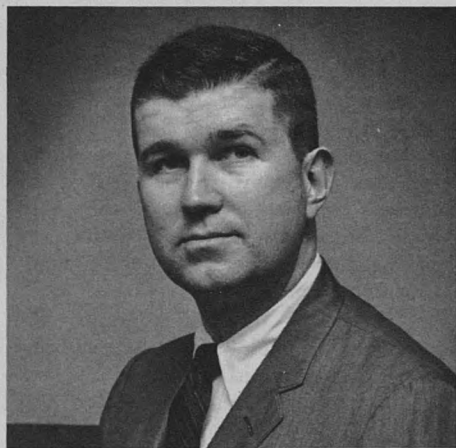
DR. LITTAUER MEETS MRS. MARIETTA TREE, UNITED STATES UNITED NATIONS HUMAN RIGHTS COMMISSION REPRESENTATIVE, WHO SPOKE AT THE AUXILIARY'S ANNUAL SPRING LUNCHEON IN APRIL. AT LEFT IS MRS. EARL SUSMAN, NEW AUXILIARY PRESIDENT. DR. LITTAUER OFTEN WAS HOST TO LEADING HOSPITAL ADMINISTRATORS AND OTHER PUBLIC FIGURES WHO VISITED THE HOSPITAL FROM ALL OVER THE WORLD; AND AS AN EMISSARY FOR JEWISH HOSPITAL HE VISITED MANY OTHER INSTITUTIONS, BOTH IN THIS COUNTRY AND ABROAD.

Gee Rose Rapidly Through The Ranks

David A. Gee, acting executive director, joined Jewish Hospital as an administrative resident in July, 1950. At the end of that year of on-the-job training, he received a master's degree in hospital administration from Washington University.

Once at Jewish Hospital on a permanent basis, he rose quickly through the ranks. He was administrative assistant from July, 1951, to December, 1952, and assistant director from 1953 to 1955. Since then he has been associate director.

Mr. Gee, a native of Cambridge, Mass., is a fellow of the American College of Hospital Administrators, American Public Health Association and the Missouri Public Health Association.



MR. DAVID A. GEE

He is a regional secretary of the American Public Health Association and a member of the AHA Joint Committee with the American Occupational Therapy Association. He is a former president of the Missouri Council on Health Careers.

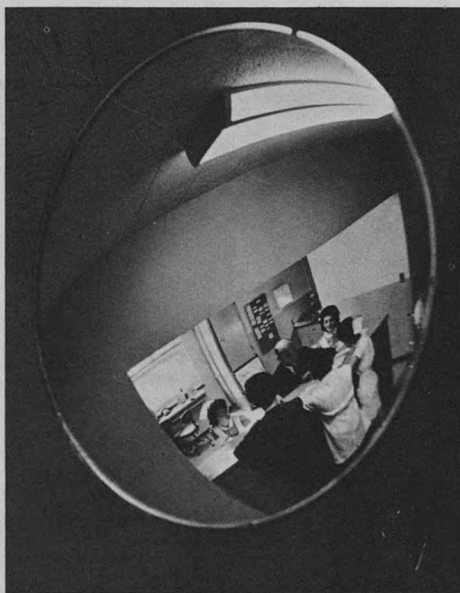
He is active on the Health and Welfare Council of St. Louis and the Hospital Association of Metropolitan St. Louis.

Since 1957, Mr. Gee has been a lecturer in hospital administration at Washington University School of Medicine. He is a research associate in the Social Science Institute of Washington University and a project director of the Medical Care Research Center.

His bibliography includes 24 articles, mainly about facets of hospital administration.

He and Mrs. Gee and their four children live in Chesterfield, Mo.

2-South Reflections



THIS UNUSUAL PHOTO CATCHES A SCENE AT THE NEW 2-SOUTH NURSING STATION. MAN IN THE MIDDLE IS DR. LEO A. SACHAR. THE MIRROR FRAMING THE PICTURE IS LOCATED IN THE CEILING ACROSS FROM THE STATION. THE MIRRORS HELP NURSING STATION PERSONNEL SPOT PATIENTS AND VISITORS IN THE CORRIDOR.

Gene Shippee Wins Dining Area Contest

Gene Shippee, assistant supervisor in the X-ray department, won the contest to give a name to the newly re-modeled main dining room. His winning entry: "The 216 Room". He won two box seats to the St. Louis Municipal Opera.

Co-runners-up were Mrs. Barbara Ulrey, occupational therapy, and Clarence Pemberton, maintenance, for their suggestion, "The Walnut Room".

Armand Jaquier, director of building services, said a sign would be erected in the dining room soon with the new name.

During the two-week contest, 138 suggestions were submitted by 70 employees.

Unfortunately, consolation prizes weren't awarded, but many of the entries deserved them. Here are some of them:

Emplyteria; The Bo Room (after Bo Axelrod, food service director); Smeatrink ("smoke-eat-drink"); The Tauer Room (last five letters of Littauer); The Adana (Sanskrit for food); The Autoclave; The Delectare;

Also, The Bucharest Lounge; The Staff of Life Room; Burlap Room (after the burlap wall coverings); Medical Rest; Jolly Hall; The House-Pitable; The Jewish Health Team Eating Room; Men's Retreat and Women's Gossip Center.

One of the cleverest was "The Newly Remodeled Dining Room". It gets an E for effort.

Orderly Known as Bard of Rehab

An orderly who likes to "brighten up patients" with funny poems and witty words is the bard of the hospital's rehabilitation division.

O'Neil Peterson, nicknamed "Sunny" for his cheerful manner, publishes poems in *The Wheelchair Review*, the rehabilitation patients' monthly newspaper.

Immersed in the lighter side of everyday life, Sunny says he has "always liked to crack jokes" and finds that when he sees or thinks something interesting "poems just come" to him.

"Working around patients gives me ideas for some of my poems," Sunny explained. "I work evenings, from 3 to 11:30 p.m., and when I come on duty there's not much activity on the ward. Without something to keep them busy, some of the patients become depressed, and when I talk to them, I just want to do my best to cheer them up."

Patients like humorous poems better than inspirational ones, Sunny believes. "I always get more comments about the funny things I scribble," he said. One of Sunny's lighter pieces is "Bill Brawley":

"I'm wild Bill Brawley from the woolly west,
Don't wear no shirt; don't wear no vest.
Wore my first pair o' shoes at age twenty-one,
And I cut all my teeth on a forty-five gun.
All the bad guys from miles around,
Run to the hills when I come to town;
And the Devil hides when I walk by
But my eighty-pound wife gimme this black eye."

Another of his works in a more serious vein was inspired by his experiences on the division. Called "A Blind Man", it reads:

"Guide me across the street, and leave me there,
But speak no words of pity or despair.
I can still weave the basket and the broom,
And make sweet music to dispel the gloom.
You think it's dark behind my sightless eyes?
You think I cannot see the sunny skies?
Hold back your pity till a darker day!
Though blind my eyes, my soul can see the way."

Classmates at Sunny's high school, O'Fallon Tech, used to call him "poet" he recalls.

He is 22, married, has a one-year-old boy.

Medical Staff Seeks Funds for New Fellowship to Honor Danish Bravery

Staff physicians are being asked to contribute to a drive to bring a Danish physician to Jewish Hospital next year as a means of recognizing Danish efforts to save its Jewish population during the early days of World War II.

In 1943, with Denmark's 8,000 Jews facing shipment to death camps, the Danish non-Jewish population cooperated in helping the Jews escape to neutral Sweden.

The most important "rescue center" in Copenhagen for the Jews was Bispebjerg Hospital. Here 2,000 Jews were marshalled together and their escapes were planned — mainly by doctors and nurses.

Dr. Herman Turner, oral surgeon on the Jewish Hospital medical staff, read about the aid given Danish Jews. He wrote to Dr. K. H. Koster, now director of surgery at Bispebjerg Hospital, and then one of the key links in the escapes, and asked if he and his friends could donate some equipment to the hospital as a tribute to its help in the escapes.

Dr. Koster said that, in lieu of equipment, it might be preferable to let one of his staff members come to Jewish Hospital for advanced training. This idea has been accepted by the medical staff and a campaign to raise \$6,000 for this fellowship is in progress.

The medical staff recently passed a resolution recognizing "the unique and outstanding efforts of the Danish people in protecting and rescuing the Jewish population of Denmark from the Nazis in World War II." "To show our appreciation and affection for the people of Denmark for this gallant act, we, the members of the medical staff of the Jewish Hospital of Saint Louis, hereby resolve to sponsor a fellowship of one year's duration for a Danish physician at the Jewish Hospital of Saint Louis."

Dr. Turner will head the fund raising campaign which will end August 1. He hopes the physician can be brought to the hospital by next January 1.

Assisting Dr. Turner in the campaign are Drs. Harry Agress, Sidney Goldenberg, Aaron Hendin, Burton A. Shatz, Alex Sonnenwirth, Saul D. Silvermintz and Noah Susman.

Dr. Orgel Again Heads Medical Staff

Dr. M. Norman Orgel has been re-elected president of the hospital's medical staff.

Dr. Benjamin Milder was elected vice-president, and Drs. Robert S. Karsh and Robert Burstein were re-elected secretary and treasurer, respectively.

Drs. Richard Sisson and Leonard Berg were elected representatives on the Joint Conference Committee of the board of directors and the medical staff.

All new officers will serve two-year terms.

Management Weds



THE MANAGEMENT GROUP IN THE HOSPITAL DIETARY DEPARTMENT WAS MARRIED JUNE 7 IN A CLAYTON COURTROOM. SHIRLEY SMITH, ASSISTANT FOOD SERVICE DIRECTOR SINCE 1960, MARRIED BO AXELROD, FOOD SERVICE DIRECTOR SINCE 1957. AFTER A HOT SPRINGS, ARKANSAS HONEYMOON, SHIRLEY RETIRED TO MANAGE THE AXELROD HOUSEHOLD IN CHESTERFIELD, MO. AND BO HEADED BACK TO THE HOSPITAL KITCHEN. "I TRAINED SHIRLEY SO WELL," AXELROD SAID, "THAT I JUST HAD TO HAVE HER AT HOME." IT'S ALMOST PREDICTABLE THAT MRS. AXELROD WILL DEVOTE SOME OF HER DOMESTIC TIME TO GOLF LESSONS.

Advent of Dials



MRS. BARBARA MOSTAGHIM, EXECUTIVE OFFICE SECRETARY, CARRIES A HANDFUL OF NEW DIAL PHONES, AVAILABLE ON A RENTAL BASIS TO JEWISH HOSPITAL PATIENTS FOR THE FIRST TIME THIS MONTH. PATIENTS WILL NO LONGER HAVE TO PLACE LOCAL CALLS THROUGH HOSPITAL OPERATORS, OFTEN A LONG AND ARDUOUS PROCESS. THE NEW SYSTEM MEANS MORE PATIENT COMFORT PLUS SPEEDIER CONNECTIONS FOR INCOMING HOSPITAL CALLS OTHER THAN TO PATIENTS.

216 to Receive National Award

216 will be honored at the American Hospital Association meeting in August as the best "internal-external" hospital newspaper in the United States this year. ("Internal-external" means the paper is written for both employees and the public).

The award, the MacEachern Citation, will be presented on behalf of *Hospital Management* magazine in ceremonies in New York.

216, with a circulation of 7,000, was founded 11 years ago.

The objective of 216 is to develop among members of the hospital family and friends of the hospital a deeper understanding of the hospital as well as pride in the institution.

The publication is planned and written by the hospital public relations department.

Volunteers Needed in Research Project

If you are between 25 and 35 years of age, in good health, with normal hearing, you can earn \$5 for two and one-half hours participation in a hearing research project at the hospital.

Persons who meet the above qualifications and are not undergoing medical or drug therapy can help determine the wide range of differences in the way persons with normal hearing respond to the same sounds. How personality affects hearing also will be studied.

Volunteers will listen to various sounds and will answer "true" and "false" questions.

The research is being conducted by the Audiology section of the Otolaryngology department.

If you wish to participate in this study, call FOrest 7-8080, ext. 279 or 292.

Nursing

Sunday Service

Sixty-Three Seniors to Receive Degrees

Sixty-three Jewish Hospital nursing students will receive their school pins and diplomas at 3:00 p.m., August 11, at Temple Shaare Emeth.

The commencement address will be delivered by Miss Mary Jane Venger, director of nursing at New York's Mount Sinai Hospital. Rabbi Martin Katzenstein of Temple Israel will give the invocation and benediction.

The Jewish Hospital Auxiliary Scholarship of \$1000 and the Hattie Waldheim Scholarship of \$500, both for advance study, will be awarded to the graduates ranking first and second respectively.

The first presentation of the Elsie Probst-Scholarship for advanced work in surgical nursing for a graduate nurse will be made and other scholarships for additional study will be awarded to Jewish Hospital graduates already in nursing practice.

Miss Elsie Null, R.N., will be formally presented with the Blanche Greenwald Scholarship for advanced study. A 1961 graduate of the hospital's school of nursing, Miss Null will attend an intensive four week course in physical rehabilitation methods at New York University Medical Center Institute of Physical Medicine and Rehabilitation next October. She is head nurse on 2 Center.

Nursing Service Appointments Made

Four new nursing service appointments have been made by Miss Edna E. Peterson, R.N., director of nursing.

Mrs. Marie Little, R.N., has been named supervisor in charge of the evening shift. She has been an assistant evening supervisor since 1957.

Mrs. Viola Sylvester, R.N., has been appointed an assistant evening supervisor. She is a 1956 Jewish Hospital graduate.

Miss Rosemary McLaughlin, R.N., has been appointed head nurse on 6 Center and Mrs. Willa Jean Nelson, R.N., assistant head nurse on 3 Center. Miss McLaughlin is a 1961 graduate of the hospital's school of nursing and Mrs. Nelson is a Homer G. Phillips alumna.

Drug Dispensing Gets Shot in Arm



A speedy way of dispensing medications which gives nurses more time for direct patient care has recently been implemented throughout the hospital.

Under the new system, frequently used drugs are stored at the nursing station. Nurses rarely need to make trips to the pharmacy for a single drug item and pharmacy can pre-package most drugs in single-dose units rather than filling individual prescriptions.

Repetitious paperwork is eliminated by use of a multi-purpose medication form.

According to a report from the industrial engineering department which de-

Miss Ryder Named Education Director

Miss Lavera Ryder, an instructor in the hospital's School of Nursing, was recently appointed Director of Nursing Education for the school.

She received a master of science degree

in nursing from Washington University early this month. A 1943 graduate of the hospital's nursing school, she remained at the hospital as a staff and head nurse. After obtaining a B.S. in nursing from Washington University in 1950, she was appointed an instructor in the school of nursing. She has taught anatomy, physiology, chemistry and microbiology.



MISS LAVERA RYDER

In her new position she will be in charge of planning and scheduling student programs. She will also handle details of the nursing school's new partnership with the Junior College District of St. Louis-St. Louis County.

Nursing School in College Partnership

Beginning this September, freshmen nursing students in the hospital school of nursing will receive some of their formal instruction from teachers supplied by the Junior College District of St. Louis-St. Louis County.

Miss Edna E. Peterson, director of nursing, said the college district will furnish instruction in anatomy and physiology, microbiology, chemistry, psychology and sociology.

Classrooms and laboratory facilities of the school will be used.

She said she hoped the school's partnership with the college district would be a continuing one because of its positive impact on the future growth and development of the school.

Partnerships between schools of nursing and junior colleges have been increasing in popularity in the United States for the last decade, she explained.

Retirement Announced

Peggy Murray Dialed Direct to Heart of Hospital in 35 Years Here



MISS PEGGY MURRAY RETURNS TO THE HOSPITAL TO SAY GOODBYE TO DR. LITTAUER AT HIS FAREWELL RECEPTION. MISS MURRAY IS RETIRING AFTER 35 YEARS ON THE HOSPITAL SWITCHBOARD. SHE'LL HAVE HER OWN FAREWELL PARTY SOON.

Miss Peggy Murray, telephone operator at the hospital, retired recently after marking her 35th year here. She has been ill.

Peggy will be honored soon with a service award at a luncheon at the hospital.

Referring to herself as "just a maid in the switchboard room," Miss Murray gathered hundreds of friends among employees and medical staff members.

For 30 years, she worked the day shift as senior switchboard operator and then, in her 31st year, she made the transition to night operator.

The night life, she said, made her foot-conscious. "I know practically everybody by their footsteps," she boasted.

She claimed she was an expert voice detector. "If you sit at the switchboard for 35 years, you can tell a doctor's voice." There were few on the medical staff whose voice would baffle her.

Persons wishing to write to Miss Murray may send correspondence to her in care of her brother, Mr. Joseph Murray, 10 Plaza Square Apartments, St. Louis, Mo.

New Record Set in Federation Drive

A new record has been set in employee contributions to the Jewish Federation drive here in the hospital.

Results show that 1,046 full or part-time employees (a record in itself) contributed \$6,933 to the 1963 drive. The quota was \$6,900.

Ninety team captains from all hospital departments assisted in achieving the record total. The drive began April 15 and ended April 26.

Jewish Hospital was the first Federation unit to report its solicitations completed.

"This is a heartwarming response to a most important charity," Dr. Littauer told employees in a written message. "My thanks to all of you who so thoughtfully demonstrated your support of the Federation."

In 1962, the Federation total was \$6,600; in 1961, \$3,560; 1960, \$3,239 and 1959, \$3,080.

Robert Rubright was chairman of the 1963 drive. Raya Richman, public relations secretary, was coordinator.

The Federation includes eight local member health and welfare agencies. Last year, the Federation allocated to the hospital \$360,000 to support ward services, medical and surgical teaching programs, the chronic disease unit, the out-patient clinics and the home care program.

Dr. Selig Simon is Dead at 86

Dr. Selig Simon, a member of the Jewish Hospital medical staff since 1911, died June 6 in the hospital. He was 86 years old.

Dr. Simon had retired in 1952 after 36 years as medical director of the old Jewish Sanatorium on Fee Fee Road.

He graduated at the age of 34 in 1910 from the Washington University School of Medicine. He previously was enrolled at Hebrew Union College, Cincinnati, with a view toward a reform Jewish rabbinate.

He interned at St. Louis City Hospital and went on to establish a practice of internal medicine. His primary interest was in the treatment of tubercular patients. For some time, he served as chief physician of the Jewish Hospital Chest Clinic.

In 1914, he married Miss Gertrude Jehle, a young graduate of the Jewish Hospital Nurses' Training School.

Dr. Simon was a native St. Louisan, but spent most of his boyhood in the Jewish Orphan's Home, Cleveland.



DR. SELIG SIMON

Clarissa Start Addresses Nursing Alumnae



POST-DISPATCH COLUMNIST, MISS CLARISSA START, SECOND FROM LEFT, ADDRESSED NURSING SCHOOL ALUMNAE RECENTLY. SHE IS SEEN WITH, FROM LEFT, MRS. SHIRLEY CYTRON, ALUMNAE ASSOCIATION PRESIDENT, MRS. EARL SUSMAN, AUXILIARY PRESIDENT AND MISS EDNA E. PETERSON, DIRECTOR OF NURSING.

Contributions to Jewish Hospital Funds

CONTRIBUTIONS RECEIVED ARE USED FOR RESEARCH, APPLIANCES FOR CLINIC PATIENTS, NEW EQUIPMENT, AND OTHER WORTHY UNDERTAKINGS, SPONSORED BY THE JEWISH HOSPITAL MEDICAL CENTER AUXILIARY.

THE FOLLOWING ARE CONTRIBUTIONS RECEIVED DURING PERIOD MARCH 4, 1963, TO MAY 10, 1963.

(CONTRIBUTIONS TO THIS FUND MAY BE MADE BY SENDING CHECKS, PAYABLE TO THE JEWISH HOSPITAL TRIBUTE FUND, TO MRS. HENRY H. STERN, 6310 WATERMAN AVENUE, ST. LOUIS 30, OR MRS. JOSEPH F. RUWITCH, 102 LAKE FOREST, ST. LOUIS 17).

DONOR **IN MEMORY OF**

Mr. and Mrs. Abe H. Goodman (Julius and Sara Ginsberg Cancer Research and Therapy Fund)
Mrs. D. Seidel
Mrs. Phil Siteman

S. BEILIN
Mr. and Mrs. Louis J. Ross (Sadye Mathes Fund)
GRANDMOTHER BELLE

MEYER BERIN
Mr. and Mrs. Frank Flotken (Sadye Mathes Fund)
Mr. and Mrs. Henry D. Ross

LOUIS BERMAN
Mr. and Mrs. David Schumaker (Virginia Ford Scholarship Fund)

STEVEN BERNSTEIN
The Frenzel
Mr. and Mrs. George Glass
Mr. and Mrs. Joseph Saffern

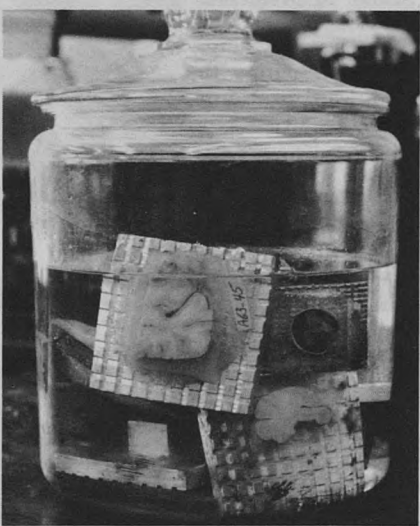
LEWIS BETTMAN
(Lewis Bettman Memorial Fund)
Mrs. Lewis Bettman, Lewis, Jr., Buddy and Andy
Mr. and Mrs. Lawton J. Levy
Mr. and Mrs. Alan Lewin
Mr. and Mrs. Joseph F. Ruwitch

SAMUEL BIERENBAUM
Margie, Todd, and Jill Bender

E. R. BROWN
I. J. Senturia (Rebecca Senturia Memorial Library Fund)

LEAH CHUSED
The Leonard Bierman Family
Mr. and Mrs. J. B. Charak
Mrs. Marian Cook
The Herman Gellman Family
Mr. and Mrs. Al D. Goldstein
Mr. and Mrs. H. S. Iglauer
Mr. and Mrs. Byron Kaminer
Mr. and Mrs. Samuel C. Klein
Mr. and Mrs. Abe Lieberman
Mr. and Mrs. Julian B. Mathes

DANIEL R. COHEN (Daniel R. Cohen Research Fund in the Department of Otolaryngology)
Mr. and Mrs. Charles Baskowitz
Mr. and Mrs. Elsworth S. Bauman
Mr. and Mrs. James T. Blair, III.
Miss Leah Chackes
Mrs. Fannie Cohen
Mr. and Mrs. Howard Cohen
Mr. and Mrs. Julius Cohen
Mr. and Mrs. Rubin Cohen
Mr. and Mrs. Stanley Cohen
Mr. and Mrs. M. L. Flotken
Mr. and Mrs. Adolph Frank
Mrs. Elsie S. Glik
Mrs. Harry Gold
Mr. and Mrs. Milton Goldman
Dr. and Mrs. Milton H. Jasper
Mr. and Mrs. Samuel C. Klein
Mr. and Mrs. Meyer Levy
Herbert F. Lewis
Mr. and Mrs. Abe Lieberman
Mr. and Mrs. Michael M. Mathes
Mr. and Mrs. Louis Meisel
Mr. and Mrs. Walter Reese
Mr. and Mrs. Morris H. Rosenthal



Mr. and Mrs. Louis J. Ross
Mr. and Mrs. Jacob N. Sapin
Mr. and Mrs. Edward Schapiro
Dr. and Mrs. Jacob Schermer
The Schneiders (Oscar Brand Memorial Fund)
Mr. and Mrs. J. A. Schweig
Mr. and Mrs. Benjamin Shapiro
Mr. and Mrs. Samuel C. Sievers
Mr. and Mrs. Alfred Vorhaus
Mr. and Mrs. Sam Zivi

JENNIE COOPER
Mr. and Mrs. Arthur H. Slonim (Heart Research)

ESSIE DAVIDSON
Mr. and Mrs. J. B. Charak
Mr. and Mrs. Harry L. Esserman
Mr. and Mrs. Frank Gellman
Mr. and Mrs. Al D. Goldstein
Mr. and Mrs. John A. Isaacs, Jr.
Mr. and Mrs. Byron Kaminer
Mr. and Mrs. Harry E. Lieberman (Oscar Brand Memorial Fund)
Mr. and Mrs. Joseph H. Pollak
Mrs. Beatrice Redler
Mr. and Mrs. Tom Tucker

OUR DEAR ONES
Mr. and Mrs. Joe Stepman

FRIEDA DEUTSCH
Dr. and Mrs. Fred Fabric

JACK DUBINSKY
Mr. and Mrs. S. Charles Baer
Mr. and Mrs. Charles Baskowitz
Mr. and Mrs. Nathan C. Berger
Mrs. Mordecai B. Brown
Mr. and Mrs. Robert Burnett
Mr. and Mrs. J. B. Charak
Mr. and Mrs. Joseph Chused
Mrs. Marian Cook
Mr. and Mrs. Irven Dubinsky
Dr. and Mrs. Julius Elson

DONOR **IN MEMORY OF**

Mr. and Mrs. M. Feldhorn
Mr. and Mrs. Carl K. Fireside
Mr. and Mrs. Arthur Fischman
Mr. and Mrs. Sam Fredman
Mr. and Mrs. Bennett Frelich
Mr. and Mrs. Louis Gelber (Sadye Mathes Fund)
Mr. and Mrs. Alvin Goldfarb
Dr. and Mrs. Alfred Goldstein
Mr. and Mrs. Alvin D. Goldstein
Mr. and Mrs. Walter K. Hamburg
Mr. and Mrs. Max A. Horwitz
Mr. and Mrs. Hank S. Iglauer
Mr. and Mrs. Sol Kaiser (Heart Station)
Mr. and Mrs. Jerome Kalishman
Mr. and Mrs. Byron Kaminer
Dr. and Mrs. Herman Katcher
Mr. and Mrs. Jason Kavin
Mr. and Mrs. I. M. Kav



Dr. and Mrs. Melvin B. Kirstein
Mr. and Mrs. Samuel C. Klein
Mr. and Mrs. Wallace Kolbrener
Mrs. Edward Kramer
Mrs. Ida E. Lauer
Mr. and Mrs. Sam Levin
Mr. and Mrs. Abe Lieberman
Mr. and Mrs. Harry E. Lieberman (Oscar Brand Memorial Fund)
Mr. and Mrs. Benjamin M. Loeb
Mr. and Mrs. Meyer Loomstein
Mr. and Mrs. Irving Londy
Mr. and Mrs. Harry Milton (Edna E. Peterson Scholarship Fund)
Mr. and Mrs. Harvey Nathanson (Sadye Mathes Fund)
Mrs. Frieda S. Novoson
Mr. and Mrs. Howard Nussbaum
Mr. and Mrs. Eugene M. Pearlina
Mr. and Mrs. Elvin K. Popper
Mr. and Mrs. Norman Probststein (Elsie K. Probststein-Harry Koplar Brace Fund)
Mr. and Mrs. M. Gilly Reifer
Mr. and Mrs. Morris H. Rosenthal
Mr. and Mrs. Joseph F. Ruwitch
Mr. and Mrs. Gene Schneider (Oscar Brand Memorial Fund)
The Schneiders - Harry, Gene and Murray (Oscar Brand Memorial Fund)
Mr. and Mrs. Hanford Sher
Mr. and Mrs. B. J. Slavin
Sam Soffer
Mr. and Mrs. Sylvan Stein
Mr. and Mrs. Joseph Steinbach (Sadye Mathes Fund)
Mrs. Beatrice Weinstein
Dr. and Mrs. S. A. Weintraub
Mr. and Mrs. Louis E. Westheimer
Mr. and Mrs. Edward Wittcoff
Mr. and Mrs. Raymond Wittcoff

JOHN DUZER
Mr. and Mrs. Henry D. Ross

JACK EDWARDS
Miss Dorothee Block

MRS. EHRlich
Mr. and Mrs. Leonard Kaufman

LEO ELLENBURG, JR.
Dr. and Mrs. Gerhard E. Gruenfeld

MRS. MAX ELSON
Mr. and Mrs. Jerome Marks

IDA ERlich
Brod-Dugan Company, Harold J. Brod, Pres.
Mr. and Mrs. Harold Kravin
JENNIE LOSOS ESSERMAN (Dr. Arthur E. Strauss Visiting Physicians Fund)
Dr. and Mrs. Clarence T. Eckert
Mrs. Maxwell Fineberg
Mr. and Mrs. Carl K. Fireside
Joseph Fischer
Mr. and Mrs. Michael Freund
Dr. and Mrs. Samuel J. Freund
Mrs. Morris Glik
Mrs. D. B. Goldman
Mrs. Lawrence Goldman
Mr. and Mrs. Samuel C. Klein
Mr. and Mrs. Wallace Kolbrener
Dr. and Mrs. Milton H. Meyerhardt
Mr. and Mrs. Henry Nankin
Mr. and Mrs. Joseph F. Ruwitch
Mr. and Mrs. Edward F. Schweich
Mr. and Mrs. Joseph Henry Schweich
Mr. and Mrs. Julius Schweich
Mr. and Mrs. Ben L. Shifrin
Mr. and Mrs. Walter J. Skrainka
Mr. and Mrs. Henry H. Stern
Walter G. Stern
Mr. and Mrs. Earl Susman
Mr. and Mrs. Louis Tiger
Mr. and Mrs. Milton H. Tucker
Mr. and Mrs. Percy Tucker
Mrs. Eugene S. Weil
Herman Willer
Mr. and Mrs. Jay V. Zimmerman

RAPHAEL FARER
Mr. and Mrs. Samuel Ginsberg (Julius and Sara Ginsberg Cancer Research and Therapy Fund)

MARVIN M. FEINSTEIN
The Bowling Mrs.
Mr. and Mrs. James Coppedge
Mr. and Mrs. Marvin Cotlar
Dr. and Mrs. David W. Helman
Mr. and Mrs. H. S. Iglauer
Milton D. Mendle
Mr. and Mrs. Edward D. Schapiro
Mr. and Mrs. Sam Schechter
Mr. and Mrs. Dan Siegel
Mr. and Mrs. Elvin Silverman
Mr. and Mrs. Joe Stepman

WILLIAM FELD
Mr. and Mrs. Max A. Horwitz
Mr. and Mrs. Sylvan Stein

DONOR **IN MEMORY OF**

Mr. and Mrs. Harry L. Laba

GUS FELDER
RICHARD I. FERER
Mr. and Mrs. Sylvan Agatstein
Mr. and Mrs. J. Arthur Baer, II.
Mr. and Mrs. Charles Baskowitz
Mr. and Mrs. Irvin Bettman, Jr.
Mr. and Mrs. James T. Blair, III.
Mrs. Mordecai B. Brown
Mr. and Mrs. Joseph Chasson
Mr. and Mrs. Sidney Cohen
Mr. and Mrs. Irven Dubinsky
Mr. and Mrs. Garland M. Eilbott
Mr. and Mrs. Alfred Einstein
Mr. and Mrs. David Eiseman, III.
Mr. and Mrs. Alexander Fihm, Jr.
Mr. and Mrs. Sheldon Fisher
Mr. and Mrs. Adolph Frank
Dr. and Mrs. Samuel J. Freund
Dr. and Mrs. Ira Gall
Mr. and Mrs. Louis Gelber (Sadye Mathes Fund)
Mr. and Mrs. Solon Gershman
Mr. and Mrs. A. Fuller Glaser
Dr. and Mrs. Alfred Goldman
Mr. and Mrs. Alvin D. Goldstein
Mr. and Mrs. Marvin W. Goodman
Jewish Hospital Auxiliary Board
Mr. and Mrs. Byron Kaminer
Mr. and Mrs. Herman Katcher
Mr. and Mrs. Sidney Katz (Elsie K. Probststein-Harry Koplar Brace Fund)
Mr. and Mrs. I. M. Kay
Mr. and Mrs. Richard J. Kline
Mr. and Mrs. Wallace Kolbrener
Mr. and Mrs. Sam Langsdorf (Oscar Brand Memorial Fund)
Mr. and Mrs. Edgar L. Levin
Mr. and Mrs. Edwin Lewis, Jr.
Mr. and Mrs. Meyer Levy
Mr. and Mrs. Abe Lieberman
Mr. and Mrs. Al S. Loeb
Mr. and Mrs. Harry W. Loeb
Mr. and Mrs. Ralph Lowenbaum
Mr. and Mrs. Harry Mendelson
Mr. and Mrs. Irving Miller
Mr. and Mrs. Harry Milton (Edna E. Peterson Scholarship Fund)
Mr. and Mrs. Harvey Nathanson (Sadye Mathes Fund)
Mr. and Mrs. Eugene M. Pearlina
Mrs. Milton Price
Mr. and Mrs. Norman Probststein (Elsie K. Probststein-Harry Koplar Brace Fund)
Mr. and Mrs. H. S. Quicksilver
Mr. and Mrs. Charles Rice
Mr. and Mrs. Harry Rosenberg
Mr. and Mrs. Joseph F. Ruwitch
Mr. and Mrs. Sidney Salomon, Jr.
Mr. and Mrs. Sidney Salomon, III.
Mr. and Mrs. Edward R. Samuels
Dr. and Mrs. Jacob Schermer
Mr. and Mrs. Marvin Schmidt
Mr. and Mrs. Gene Schneider (Oscar Brand Memorial Fund)
Mr. and Mrs. Carroll C. Shelton
Mr. and Mrs. Hanford Sher
Mr. and Mrs. Joseph Sokolik
Mr. and Mrs. Elliot Stein
Mr. and Mrs. Charles J. Steiner
Mr. and Mrs. Henry H. Stern
Mr. and Mrs. Jess Stern



Mr. and Mrs. Joseph Steinbach (Sadye Mathes Fund)
Mr. and Mrs. Edward J. Turner
Mr. and Mrs. Millard A. Waldheim
Mr. and Mrs. R. Reuben Zimmerman

ANNA FINK
The Girls in Dept. 60 at Saks Fifth Ave. — Maryland Plaza
Mr. and Mrs. Albert Kolchinsky

JACK FISHER
Louis H. Bauman

FRANCES FLEISCHMAN
Mrs. Julius Ginsberg (Julius and Sara Ginsberg Cancer Research and Therapy Fund)

ELY GALANSKY
Mrs. Maurice Davis

NATHAN E. GARBER
Mr. and Mrs. Max A. Horwitz
Mr. and Mrs. Robert L. Shifrin

ROSE GASKIN
Mrs. Doreen Broudy
Mr. and Mrs. Sidney Jacobs
Mr. and Mrs. Abe Lieberman
Mr. and Mrs. Jerome Molasky
Mr. and Mrs. M. Gilly Reifer
Dr. and Mrs. Sol Weber

IRVING GASSER
Mr. and Mrs. Mayer Rashbaum

SAMUEL GERSON
Mr. and Mrs. Irvin Bettman, Jr.
Dr. and Mrs. Moyer S. Fleisher (Rehabilitation Division)

MAX GINSBURG
Mrs. Sol Kaiser
Mr. and Mrs. Bernard Levinsohn
Mr. and Mrs. Ben Schmidt
Mr. and Mrs. Benjamin L. Slosberg
Mr. and Mrs. Saul Spielberg
Mr. and Mrs. David Stein

BERNARD K. GOLDBERG
Mr. and Mrs. Joseph L. Oberman

MOTHER GOLDSTEIN
Mrs. A. Friedstat
Mr. and Mrs. Sidney Sigoloff and Family

MR. GOODFRIEND
Mrs. Carl Lippman

NATHAN GORDON
Dr. and Mrs. Lester Busch
Mr. and Mrs. Arthur R. Bortnick
Mr. and Mrs. Irven Dubinsky
Mr. and Mrs. Meyer M. Fishman
Mr. and Mrs. Ralph M. Friedman
Mr. and Mrs. George Glass
Dr. and Mrs. Michael M. Karl
Mr. and Mrs. Harry L. Laba
Mr. and Mrs. Meyer Loomstein

DONOR **IN MEMORY OF**

Mr. and Mrs. Edwin Pepper
Mr. and Mrs. Leslie Roth
Mr. and Mrs. David Stein
Mrs. Dorothy Steinback

ERWIN G. GREENBLATT
Mr. and Mrs. Arthur Bromberg

ROY HAAS
Mr. and Mrs. Arthur Fischman
Mr. and Mrs. Frederick H. Freund
Pauline, Alex, and Ruth Freund
Mr. and Mrs. Louis Gelber (Sadye Mathes Fund)
Mr. and Mrs. Carl Lippman
Mrs. Gus Mosinger
Mrs. Paul S. Sigman and Lois

HARRY H. HARDIN
Mr. and Mrs. Fred J. Frank

FLORENCE MANGE HARTMANN
Mrs. Irving Hartmann and Marilyn Jo
Mr. and Mrs. Stanley Lentin
Mr. and Mrs. Charles W. Mintz
Mr. and Mrs. H. S. Quicksilver

SADIE HELLER
Mr. and Mrs. Arthur Fischman

MORRIS HIRSCHOWITZ
Mr. and Mrs. Albert M. Oglander

ROSELLA ANNA JOURMAN
Mr. and Mrs. Dave Beck
Mrs. Norman A. Feldberg
Mr. and Mrs. Sigmund S. Langsam
Mr. and Mrs. Joseph Silverstein
Mr. and Mrs. Saul Spielberg
Mr. and Mrs. Earl Susman
Mr. and Mrs. Meyer K. Weil
Herman Willer

ISRAEL KAHN
Arthur S. Feiss

FATHER OF MR. AND MRS. HAROLD KAPELOWITZ
Irvin Bettman, Jr.
Morris Glaser

NATHAN KAPLAN
Dr. and Mrs. H. R. Senturia

ANNA KOMAR
Mr. and Mrs. Charles Crane
Mr. and Mrs. A. Kolchinsky

MAX LAPPIN
Mr. and Mrs. Herbert N. Arnstein
Mr. and Mrs. Paul H. Berwald

ROSE BARKER LAZARUS
Mr. and Mrs. Earl Susman (Heart Research)
Mr. and Mrs. Milton Susman (Heart Research)
ETHEL KLEIN LEDERER

OSCAR LEONARD
Mrs. Esther Brown
Mr. and Mrs. Carl Finn
Mrs. Morris Glik
Mr. and Mrs. James Lederer
Mr. and Mrs. Carl Lippman
Mrs. Paul S. Sigman and Lois
Mrs. B. P. Singer
Mr. and Mrs. Meyer K. Weil

BESSIE LEVINE
Dr. Leo A. Sachar

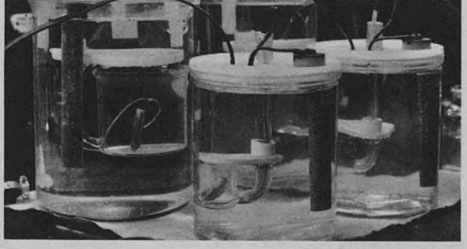
FANNY BERGER LEWIS
Mr. and Mrs. George Benson

Mr. and Mrs. Macy C. Abrams
Mr. and Mrs. Elsworth Bauman
Mr. and Mrs. Arthur Fischman
Mr. and Mrs. Frank Flotken (Sadye Mathes Fund)
Mr. and Mrs. Louis Gelber (Sadye Mathes Fund)
Mr. and Mrs. Bill Ginsberg (Julius and Sara Ginsberg Cancer Research and Therapy Fund)
Mrs. Julius Ginsberg (Julius and Sara Ginsberg Cancer Research and Therapy Fund)
Dr. and Mrs. B. Y. Glassberg
Mr. and Mrs. Mayo Gottliebson
Mr. and Mrs. Abe Lieberman
Mr. and Mrs. Michael M. Mathes
Mr. and Mrs. Nathan Mathes (Sadye Mathes Fund)
Mr. and Mrs. Melvin J. Mednikow
Mr. and Mrs. Albert M. Oglander
Mr. and Mrs. Isidore Reifeld
Mr. and Mrs. Donald Ross
Mr. and Mrs. Eli Sandperl
Mr. and Mrs. Jacob N. Sapin
Dr. and Mrs. Jacob Schermer
Mr. and Mrs. Eli P. Schwartz
Mr. and Mrs. Edward Wittcoff
Mr. and Mrs. Sam Wolff

CHARLES B. H. LOVENTHAL
Mr. and Mrs. Roger Boas
Mr. and Mrs. Edward Wittcoff

SARA W. LOWENHAUPT
Elma Ettman
Mr. and Mrs. Henry H. Stern
Mrs. Ralph Weil

ELMER C. LYNAM
Mrs. Sol H. Engel



DR. HERMAN MAAS
Dr. C. J. Cherre
Dr. and Mrs. Moyer S. Fleisher (Rehabilitation Division)
Dr. Loitman
Dr. and Mrs. Joseph M. Orenstein
Dr. P. C. Schnoebelen
Dr. H. R. Senturia
Dr. Noah Susman

FATHER OF MRS. NAT MALT
Mr. and Mrs. David Spector

MILTON MEYER
Mrs. Morris Glik
Mr. and Mrs. Victor Friedman
Mrs. Jessie Harris
Charles and Arthur Rachelman
Mr. and Mrs. Philip P. Siegfried

I. W. MILLER
Mr. and Mrs. Max A. Horwitz

JACKIE SUE MARGULIS LIVER RESEARCH FUND
Mrs. P. Kovsky
Mrs. D. Sonenchein

WOLF MEISENBERG
Mr. and Mrs. Archie Glick

DONOR **IN HONOR OF**

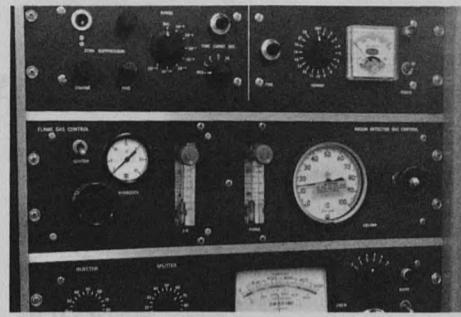
MR. AND MRS. ROBERT MATHES (40th Wedding Anniversary)
 Mr. and Mrs. Raymond Freed
MR. AND MRS. EDWARD F. SCHWEICH (35th Wedding Anniversary)
 Mr. and Mrs. Maurice J. Freeman
 Dr. and Mrs. Melvin B. Kirstein
 Mr. and Mrs. Lawton J. Levy
 Mr. and Mrs. Benjamin M. Loeb
 Mrs. Milton Price
MR. AND MRS. HAROLD TOBER (35th Wedding Anniversary)
 Mr. and Mrs. Max A. Horwitz
MR. AND MRS. KAY F. SHERMAN (25th Wedding Anniversary)
 Mr. and Mrs. Harry Milton (Edna E. Peterson Scholarship Fund)
MR. AND MRS. ARTHUR FISCHMAN (Wedding Anniversary)
 Mrs. Jessie Harris
DR. AND MRS. MILTON H. JASPER (Wedding Anniversary)
 Mr. and Mrs. Ben Ragin



MR. AND MRS. KARL WEIL (Wedding Anniversary)
 Mr. and Mrs. Martin Landauer
JUDGE ROBERT L. ARONSON (Recovery)
 Mr. and Mrs. Ludwig Wolf
MRS. ROBERT L. ARONSON (Recovery)
 Mr. and Mrs. Leo Rosen
NATHAN BASS (Recovery)
 Mrs. Julius Ginsberg (Sara and Julius Ginsberg Research Fund)
MR. AND MRS. NATHAN BERGER (Recovery)
 Mr. and Mrs. Arthur Fischman
SIDNEY M. BERGMAN (Recovery)
 Mr. and Mrs. Peter H. Moshbacher
SAM BIERMAN (Recovery)
 Mr. and Mrs. Julius H. Berg
 Dr. and Mrs. William A. Marmor
 Mrs. Jacob Rubin
SOL BUXNER (Recovery)
 Mrs. Sol Kaiser (Heart Fund)
BERNARD CARP (Recovery)
 Mr. and Mrs. Louis J. Ross (Sadye Mathes Fund)
MRS. LOUIS COHEN (Recovery)
 Mrs. Adolph Neuman
JACK FAINTICH (Recovery)
 Lucille Tzinberg
M. B. FRIEDMAN (Recovery)
 Mr. and Mrs. Leo Newman
 Mr. and Mrs. Sam Schechter
AL GELBER (Recovery)
 Mr. and Mrs. Louis Gelber (Sadye Mathes Fund)
 Mr. and Mrs. Myron Hochman
 Mr. and Mrs. Edgar L. Levin
MRS. GERTRUDE GIDDAN (Recovery)
 Mrs. Samuel M. Friedman
MR. AND MRS. BEN GOMBERG (Recovery)
 Mr. and Mrs. Harry Sherman
 Mr. and Mrs. Sidney Sigoloff
DAVE GROSBERG (Recovery)
 Mr. and Mrs. Meyer Loomstein
HERMAN W. HEYMAN (Recovery)
 Mr. and Mrs. Raymond Freed
MRS. MAURICE L. HIRSCH (Recovery)
 Mrs. Milton Price
JULIUS HORWITZ (Recovery)
 Mrs. Samuel M. Friedman
MRS. ARNOLD KOMINSKY (Recovery)
 Mr. and Mrs. Abe Lieberman
MRS. HAROLD LEAVITT (Recovery)
 Miss Ann Blank
AL LIBRACH (Recovery)
 Mr. and Mrs. Leonard Kaufman
AUGUSTUS LOEB (Recovery)
 Mr. and Mrs. George Perlmutter
SAMUEL S. MANDEL (Recovery)
 Mr. and Mrs. Jack Kosky
MRS. NATHAN MATHES (Recovery)
 (Sadye Mathes Fund)
 Mr. and Mrs. Jack H. Burack
 Mr. and Mrs. Louis Gelber
 Mr. and Mrs. Sam Hacker
 Mr. and Mrs. Robert Mathes
 Mr. and Mrs. Louis J. Ross
 Joseph Steinbach
MRS. LILLIAN MESSING (Recovery)
 Mr. and Mrs. Arthur Bromberg
 Mr. and Mrs. Joseph F. Ruwitch
HARRY NEUMAN (Recovery)
 Dr. and Mrs. Kenneth Green

DONOR **IN HONOR OF**

NATHAN PEPPER (Recovery)
 Mrs. Samuel M. Friedman
MRS. L. ROSENBLUM (Recovery)
 Mrs. Lena Sager
MRS. JACOB RUBIN (Recovery)
 Mr. and Mrs. Leo Rosen
JOSEPH J. SENTURIA (Recovery)
 Mr. and Mrs. Alex M. Rubenstein (Rebecca Senturia Memorial Library Fund)
MRS. MERLE SIEVERS (Recovery)
 Mrs. Esther Brown
IRVIN SOKOLIK (Recovery)
 Mr. and Mrs. Joe Stepman
MRS. FRANK SOLL (Recovery)
 Molly Ruden
MRS. MORRIS STERN (Recovery)
 Mrs. Dave Seidel
MRS. MARJORIE STRAUSS (Recovery)
 Mrs. Herbert S. Goodman
LOUIS TEITELBAUM (Recovery)
 Mr. and Mrs. Morris Londe
MRS. STANLEY VICTOR (Recovery)
 Mr. and Mrs. Jerome B. Cohen
MRS. DAVID P. WOHL (Recovery)
 Dr. and Mrs. Bernard C. Adler
SAM BIALOCK
 Sophie Seidel
MRS. JACOB RUBIN
 Sophie Seidel
ROBERT ACKERMAN (his engagement)
 Mrs. Samuel M. Friedman
MR. AND MRS. MAURICE FISCHMAN (Their marriage)
 Mrs. Mordecai B. Brown
 Mrs. Irving Hartmann
MR. AND MRS. GUS VITTELT (Their marriage)
 Dr. and Mrs. Milton H. Jasper
KIRBY WESTHEIMER (His marriage)
 Mr. and Mrs. Harry Milton (Edna E. Peterson Scholarship Fund)
MR. AND MRS. ARTHUR BROMBERG (Their new grandson)
 Mr. and Mrs. Isador A. Solomon
DR. AND MRS. BERNARD GARFINKLE (Birth of son)
 Dr. and Mrs. Ira Gall
DR. AND MRS. ROBERT KARSH (Birth of son)
 Dr. and Mrs. Ira Gall
MR. AND MRS. THOMAS TUCKER (New son)
 Mr. and Mrs. Leonard Kaufman
MR. AND MRS. PERRY MEHLMAN (New Home)
 Mr. and Mrs. Melvin Friedman
TOMMY SPITZER (Bar Mitzvah)
 Mrs. Harry Spitzer
DONATIONS
 Mrs. Fred C. Hanley
 Max Hene
 Dr. F. O. Richards
BETH EL CONGREGATION ASSISTANCE FUND
IN MEMORY OF MR. GOLDBERG (Father of Mrs. Norman Wolff)
 Mr. and Mrs. Irwin Page
MR. JACOB GOLDMAN (Father of Mrs. Harry Peters)
 Miss Mary McKeever
MRS. LEAH POLSKI
 Mrs. Bernard DeHovitz
 Mrs. Jeanette DeHovitz
 Miss Mary McKeever
 Mr. and Mrs. I. E. Shanfeld
CARDIOPULMONARY LABORATORY FUND
IN HONOR OF MR. ALBERT S. ALOE (70th Birthday)
 Jewish Hospital Tribune Fund
CHRONIC DIVISION EDUCATION AND RESEARCH FUND
IN MEMORY OF MYRTLE ALLEN (Son of Mr. and Mrs. Isadore Wolff)
 Mrs. Ernest Allen (Girls at Time, Inc.)
DAVID WOLFF
 Mrs. Leslie Chabay



DANIEL R. COHEN MEMORIAL RESEARCH FUND
IN MEMORY OF MR. DANIEL R. COHEN (Husband of Pearl Cohen)

Mr. and Mrs. Robert Abrams
 Mr. and Mrs. A. J. Alpart
 Mr. and Mrs. Meyer Blocher
 Mr. and Mrs. Myrl A. Cohen
 Dr. and Mrs. Bernard DeHovitz
 Mrs. Jeanette DeHovitz
 Rose Fremder
 Misses Rose and Leona Fuchs
 Employees of Glasco Electric Co. (L. J. Davis)
 Mr. and Mrs. Milton Greenfield, Jr.
 Mr. and Mrs. A. M. Manlin
 Mr. and Mrs. Sam Rosenberg
 Dr. and Mrs. Ben Senturia
MR. JACK DUBINSKY
 Mr. and Mrs. Greenfield, Jr.
MRS. MOLLIE SALOMON (Mother of Sidney Salomon, Jr.)
 Mr. and Mrs. Greenfield, Jr.
ALVIN GOLDMAN RESEARCH FUND
IN HONOR OF MR. HERBERT FRANK (70th Birthday)
 Mrs. Alvin D. Goldman
ROSE HOFFMAN MEMORIAL FUND
IN MEMORY OF ROSE HOFFMAN
 Mrs. Rose Schorr
JOSEPH D. KARSH MEMORIAL LIBRARY
IN MEMORY OF JOSEPH D. KARSH (Father)
 Robert S. Karsh, M.D.
JEANETTE RACHELMAN
 Dr. and Mrs. Robert Karsh
IN HONOR OF JOSHUA KARSH (son)
 Robert S. Karsh, M.D.
SAM AND JEANNETTE KOPLAR REHABILITATION FUND
IN HONOR OF JEANNETTE KOPLAR (Mothers Day)
 Mr. and Mrs. Morris Shenker
FREDA LITTAUER MEMORIAL FUND
IN MEMORY OF CARL HERWITZ
 Mrs. Ruth Herwitz
BESSIE SHAPIRO SCHULKIND
 Mrs. Ruth Herwitz
JACKIE SUE MARGULIS LIVER RESEARCH FUND
IN MEMORY OF BERNARD GOODMAN (Husband of Mrs. Rose Goodman)
 The Thursday Club
SADYE MATHES FUND
IN MEMORY OF BEN STEINBACH
 Dr. and Mrs. A. A. Schwartz
PATIENT CARE FUND
 Duard Fitzgerald
IN MEMORY OF JACK DUBINSKY
 Mr. K. W. Doehring
 Mr. and Mrs. Arthur C. Husmann
 Mr. A. C. Husmann (Employees)
MRS. SIDNEY SALOMON, SR. (Mother of Sidney Salomon, Jr.)
 Mrs. Roy W. Harper
MRS. WILLIAM SHERMAN (Wife of Mr. William Sherman)
 Mr. and Mrs. Joseph W. Hirschhorn
MRS. B. ZWIBELMAN
 Mr. Joseph Rothberg
IN HONOR OF MR. AND MRS. JACK GOLDMAN (25th Wedding Anniversary)
 Mr. and Mrs. Gilbert Rosenthal
EDNA PETERSON SCHOLARSHIP FUND
IN MEMORY OF HELEN R. PUTZEL
 Mr. Henry V. Putzel

MARCUS RICE
 Mr. and Mrs. Morton D. May
 Mr. Morton J. May
ELSIE PROBSTEN - HARRY KOPLAR BRACE FUND
IN MEMORY OF AUGUST SABADELL (Husband of Mrs. August Sabadell)
 Dr. Jacob Probststein
MRS. SIDNEY SALOMON, SR. (Mother of Sidney Salomon, Jr.)
 Dr. Jacob G. Probststein
REHABILITATION-CHRONIC DIVISION EDUCATION AND RESEARCH FUND
IN MEMORY OF SHIRLEY PAULINE WEISMAN (Sister of Mrs. Hester Flom)
 Mrs. Sylvia Goldenhersh
 Mr. Gus Tzinberg
RESEARCH INSTITUTE FUND
IN MEMORY OF ABE BALK (Father of Mrs. Ida Levitt)
 Mr. and Mrs. Hymen Polishuk
MRS. DOROTHY BLOOM
 Mr. and Mrs. Hymen Polishuk
MR. ROZTRAN (Father of Dr. and Mrs. Nat Goldberg)
 Mr. and Mrs. Jerry Feldman
 Mr. and Mrs. Harold Greenberg
MR. DAVID WOLFF
 Mr. and Mrs. Harold Greenberg
IN HONOR OF MRS. MARIAN COOK (Speedy Recovery)
 Mr. and Mrs. Harold Greenberg
FLORENCE MOEL (Speedy Recovery)
 Mr. and Mrs. Harold Greenberg
SIDNEY I. ROTHSCHILD MEDICAL LIBRARY FUND
IN MEMORY OF DR. HERMAN MAAS
 Jewish Hospital Doctors Bowling League
MR. LOUIS G. ROTHSCHILD
 Mrs. Louis G. Rothschild
LOUIS AND SARAH SACHS MEMORIAL FUND
IN MEMORY OF HERMAN ADLER (Father of Leon Adler)
 Dena and Samuel C. Sachs
DANIEL R. COHEN (Husband of Pearl Cohen)
 Dena and Samuel C. Sachs
JACK DUBINSKY
 Dena and Samuel C. Sachs
MRS. SARAH SACHS (Mother of Messrs. Sam C. Sachs and Milton Sachs)
 Sachs Electric Corp. Employees
 (Mrs. Mary A. Cummins representative)
MRS. MOLLIE SALOMON (Mother of Sidney Salomon, Jr.)
 Dena and Samuel C. Sachs
SALE MEDICAL LIBRARY FUND
IN MEMORY OF MRS. EMIL KATZ
 Gunter Schmidt, D.D.S.
IRA AND HERBERT SIMON RESEARCH FOUNDATION FUND
IN MEMORY OF MR. BERT SIMON
 Mrs. Herbert B. Simon
 Mrs. Ira Simon
STANLEY WOHL (Brother of Mrs. Hazel Weile)
 Laura Simon
IN HONOR OF JULIAN SIMON (Birthday)
 Mrs. Ira Simon
ARTHUR E. STRAUSS VISITING PHYSICIAN FUND
IN HONOR OF DR. STRAUSS AND DR. ALEX (Appreciation and kindness shown her)
 Mrs. Sadie Senturia
DR. ARTHUR E. STRAUSS (Tribute to)
 Mr. and Mrs. Walter V. Wolff
SURGICAL REHABILITATION OF HEARING FUND
IN MEMORY OF SOPHIE SENTURIA (Mother of Dr. Ben Senturia)
 Mr. and Mrs. David Eiseman, III
 Helene and Stix Friedman
 Mrs. Alvin D. Goldman
 Dr. and Mrs. Carl J. Heifetz
 Dr. and Mrs. Edward Massee
SURGICAL RESEARCH FUND
IN MEMORY OF MR. OSCAR LEONARD
 Mr. and Mrs. Rudolph Launer
 Mr. and Mrs. William Zieres
SAMUEL B. WESTLAKE FUND
 Mrs. David Eiseman, Jr.

Goldman Team Tops Med Staff Bowlers

The team captained by Dr. Alfred Goldman headed the list of medical staff bowling league winners. The league celebrated the end of its third season at a recent awards banquet, with prizes presented to 32 of its 92 members.

Dr. Goldman's team includes Mrs. Goldman, Dr. and Mrs. Irwin Levy, Dr. Arnold Goldman and Dr. Robert Treiman. The second-ranking team, headed by Dr. Leon Foster, includes Dr. and Mrs. Herman Turner, Dr. and Mrs. Max Franklin and Dr. Robert Maletich.

Winners of the men's trophies for highest averages during the year and their averages are Drs. Herman Roodman, 180, Murray Chinsky, 169, and Robert Maletich, 166. Taking home women's trophies for highest averages were Mrs. Ellis Lipsitz, 158, Mrs. Herman Roodman, 140, and Mrs. Lawrence Aronberg, 138.

Capturing men's trophies for the highest three-game score during a single night were Drs. Alfred Goldman, 609, Phil Goldstein, 601, and Sidney Goldenberg, 562. Women's winners for the same event were



TOP MEDICAL STAFF BOWLING LEAGUE TEAM. FROM LEFT, DR. AND MRS. IRWIN LEVY, DR. AND MRS. ALFRED GOLDMAN, DR. ARNOLD GOLDMAN AND DR. ROBERT TREIMAN.

Mrs. Phil Goldstein, 541, Mrs. Shale Rifkin, 485, and Mrs. Aaron Birenbaum, 483.

Rolling the highest score for a single game during the year were Drs. Alan Skirball, 244, Lawrence Aronberg, 237, and Sam Schneider, 236. Mrs. Marvin Renard, 204, Mrs. Theodore Merrims, 202, and Mrs. Alfred Goldman, 200, captured

women's trophies in this category.

Most improved bowlers were Dr. Arnold Goldman by 11 pins and Mrs. Herman Turner by 20 pins.

Medical staff members wishing to participate in next season's league activities should contact either Dr. Murray Chinsky or Dr. Aaron Birenbaum by July 15.

Rubright Resigns As P.R. Director

Robert Rubright, public relations director of Jewish Hospital since April, 1959, has resigned to become general manager of the creative division, Frank-James Productions, Clayton, Mo.

Mr. Rubright, has been responsible for patient relations, employee events, in-hospital fund raising, publications and publicity.

He holds degrees from Westminster College, Fulton, Mo. and the University of Wisconsin. He is a member of the Public Relations Society of America and is active in St. Louis civic affairs. He is a former reporter for the *Minneapolis Star and Tribune*.

Mr. Rubright lives in Kirkwood with his wife and two small sons.

216, published bi-monthly by the Public Relations Department of the Jewish Hospital of St. Louis.

Joseph F. Ruwitch, president
 David A. Gee, acting executive director

Robert Rubright, director of public relations

Lynne F. Lamberg, editor

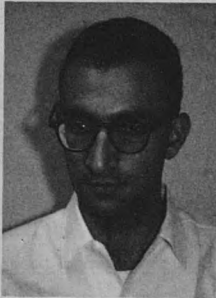
THUMBNAIL SKETCHES

Eight New Residents Start July 1; House Staff Members Total 49

Eight new residents joined the Jewish Hospital house staff July 1. They joined 13 interns (see April 216) and 27 other residents who were interns here this past year or who have been residents here one or more years. They are:



DR. SCHONFELD



DR. SENIOR

New third-year resident in medicine, **Dr. Gustav Schonfeld** comes from a first and second year medical residency at Bellevue Hospital in New York. A graduate of Washington University and its medical school, he externed at Jewish Hospital and interned at New York University Hospital. Born in Czechoslovakia, he is married and has two children.

Dr. Robert Morris Senior interned and served his first-year residency on the private medical service at Barnes Hospital. He will be a second-year resident in medicine. He received his A.B. from Oberlin University and his M.D. from George Washington University, is married with two children. He is a native of White Plains, N. Y., and a member of Alpha Omega Alpha medical honorary.

A native of Czechoslovakia whose home is now Israel, **Dr. Simon Spitzer** has begun a second-year residency in medicine. Married with two children, he served his internship and first-year residency in medicine at The Jewish Hospital of Cincinnati. He graduated from the Herzl Gymnasium in Tel Aviv and the University of Zuerich, in Switzerland.



DR. SPITZER



DR. EIDEX

The twin brother of Jewish Hospital intern **Dr. Maxwell Eidex**, **Dr. Marshall Finley Eidex** is a first-year resident in medicine here. He interned at Piedmont Hospital in Atlanta, Ga. and is a graduate of the University of Chattanooga and Emory University School of Medicine. He is married and a native of Birmingham.

A native of Colombia is a second-year resident in Obstetrics and Gynecology here. He is **Dr. Jorge Bernal** who graduated from the University del Valle in Cali, Colombia, and served both his internship and first-year residency in obstetrics and gynecology at the University hospital. He is married.



DR. BERNAL



DR. MATHELIER

A native of Port-au-Prince, Haiti, is a first-year resident in obstetrics and gynecology. **Dr. Amedeo Mathelier** went to a Haitian medical school and interned at the Jewish Hospital of Brooklyn, N. Y. He is single.

Dr. Bruce MacCannell of Charlottetown, Prince Edward Island, Canada is a second-year resident in psychiatry. He received an M.D. from Dalhousie University in Nova Scotia. He and his wife have ten children.



DR. MacCANNELL

New first-year resident in ophthalmology, **Dr. Raul Alberto Yanow** served a rotating internship at Mount Sinai Hospital, Cleveland. Married and a native of Argentina, he received his M.D. from the University of Buenos Aires.

Returning in February, 1964, to complete his first year of residency in medicine here which was interrupted by two years of army service will be **Dr. Phillip Erwin Korenblat**. Born in Little Rock, Arkansas, he attended Little Rock University and received his M.D. from the University of Arkansas. He is married and interned here.



DR. YANOW



DR. KORENBLAT

Twins Are Identical-- In Pictures, Anyway

A photograph of **Dr. Marshall Eidex** was needed for use in 216. Since he had not arrived at the hospital, his brother, house staff member **Dr. Max Eidex**, was asked to supply the picture. He furnished the snapshot used on this page.

"Your brother looks just like you," he was told.

"That's a picture of me," he replied. "We're identical twins."

House Staffers Bid Us Goodbye

Each June 30, the hospital bids goodbye to members of the house staff who leave to join the armed forces, establish private practice or go on to advanced training programs. Here is a rundown on our departing house staff members:

Entering private practice: Lester L. Mann, M.D., in Freeport, Illinois (general practice); Samuel Lugo, M.D. in Florissant, Mo. (general surgery); Donald Ikeda, M.D. in Honolulu, Hawaii (radiology); Warren Jacobsohn, M.D. in Florissant, Mo. (internal medicine); Arnold M. Goldman, M.D., in St. Louis (internal medicine); Clarence Benage, M.D. in Florissant, Mo. (general surgery); Theodore Stander, D.D.S., in Denver, Colo.; Charles Herbert, D.D.S., in Cape Girardeau, Mo.; Amir Mostaghim, M.D. to private practice in Iran; Arnoldo Kuczer, M.D., returning to Argentina and Raymond Hartwig, M.D. in Trinity Lutheran Hospital, Kansas City, Mo.

Entering the armed forces: Benje Boonshaft, M.D., Travis Air Force Base, California; Steven M. Fredman, M.D., Elizabeth City, N. C. Coast Guard Station, (officer in U.S. Public Health Service assigned to Coast Guard), Charles Wielend, M.D., Wurtsmith Air Force Base, Oscoda, Michigan, and Ray Wolf, M.D., Richards-Gebour Air Force Base, Grandview, Mo.

Advanced training: Arthur W. Traum, M.D., to junior assistant resident in medicine, University Hospital, Baltimore, Md.; Morton Rothbard, M.D. to assistant resident, Bellevue Hospital, New York City; Barry Steiger, M.D. to fellowship in cardiology, Barnes Hospital; Morton A. Levy, M.D. to research fellow, department of epidemiology, Harvard University School of Public Health and surgeon, U. S. Public Health Service Epidemic Intelligence Service, Boston, Mass.

Jerry Beguelin, M.D. to assistant resident in surgery, St. Louis County Hospital; **Blanca M. Perez, M.D.** to third-year resident in pathology, Texas Children's Hospital, Houston, Texas; **Rahmatollah Simani, M.D.** to surgical resident, Ellis Fischel Cancer Hospital, Columbia, Mo.; **Gerald Wool, M.D.** to first-year resident in pediatrics, St. Louis Children's Hospital; **Sheldon F. Lipson, M.D.** to resident in anesthesiology, Philadelphia (Pa.) General Hospital; **Israel Giladi, D.M.D.** to district dental surgeon, National Swedish Public Health Service.

Mr. Rosen Receives Two Fine Gifts



A \$3000 CHECK FROM THE N.R. SOCIETY FOR OBSTETRICAL RESEARCH AT THE HOSPITAL IS PRESENTED BY MRS. FRANCIS D. ISRAEL TO HARRY ROSEN, HOSPITAL DIRECTOR OF RESOURCES AND DEVELOPMENT. THE FRANCIS D. ISRAEL OBSTETRICAL RESEARCH FUND AT THE HOSPITAL HAS ASSISTED OBSTETRICAL STUDIES SINCE 1947.



MRS. JACOB MELLMAN, PRESIDENT OF THE BEN A'KIBA AID SOCIETY, PRESENTS MR. HARRY ROSEN A CHECK FOR \$1,500 AT HER SOCIETY'S ANNUAL MEETING THIS SPRING. THE SOCIETY HAS CONTRIBUTED FOR YEARS TO THE OUT-PATIENT SECTION OF THE ELLEN STEINBERG DEPARTMENT OF CHILD PSYCHIATRY.

Special Lab Opened in Biochemistry

A laboratory which routinely handles out-of-the-ordinary procedures is being instituted by the biochemistry section of the department of pathology and laboratories.

"The lab will provide services not offered anywhere else in St. Louis in a clinical lab," **Dr. Sam Frankel**, biochemist, said. "We'll be devising and improving various techniques of interest to clinicians."

Plans for the new lab include increased

use of instrumentation and automatic equipment. One recent acquisition was an osmometer which indicates total solids dissolved in blood, urine, and other body fluids, by measuring the freezing point of the various solutions. The osmometer is of use in all conditions involving fluid and salt control.

"We hope to extend our use of micro-techniques," **Dr. Frankel** said. "The smaller the sample of material we need, the easier it is on the patient."

Tests of several toxic substances such as arsenic, lead and mercury will be introduced. The varieties of enzyme tests now available will be enlarged.

Transport Mechanism Speakers Are Listed

Physicians and scientists from all over the United States will come to Jewish Hospital October 25 for an all-day symposium on transport mechanisms.

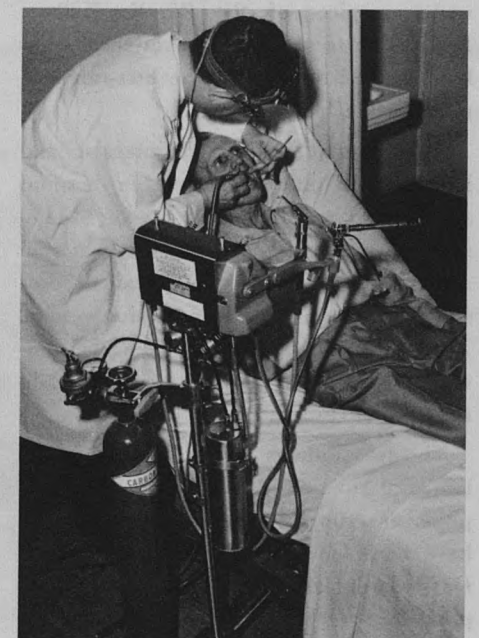
An annual event, the symposium is the fourth to be sponsored jointly by Jewish Hospital, Washington University School of Medicine and St. Louis University School of Medicine.

Symposium participants are: **Dr. Robert W. Berliner**, director of intramural research, National Heart Institute; **Dr. Halvor N. Christensen**, professor and chairman of the department of biological chemistry, University of Michigan School of Medicine; **Dr. Robert K. Crane**, professor and chairman of the department of biochemistry, Chicago Medical School; **Dr. Isidore S. Edelman**, professor of medicine and physiology and associate director, cardiovascular research institute, University of California School of Medicine;

Dr. Oscar M. Hechter, senior scientist, Worcester (Mass.) Foundation for Experimental Biology; **Dr. C. Adrian M. Hogben**, chairman and professor of the department of physiology, State University of Iowa College of Medicine; **Dr. Robert L. Post**, associate professor of physiology, Vanderbilt University School of Medicine, and **Dr. Arthur K. Solomon**, associate professor of biophysics, Harvard Medical School.

Persons wishing further information should contact **Dr. Albert Eisenstein**, department of medicine, who is coordinating the event.

Office on Wheels



A dentist's office on wheels is used by **Dr. Julius Godwin**, on a physically handicapped patient.

The 40 lb. unit runs on carbon dioxide gas and has high and low speed drills. It can be wheeled to a patient's bedside, or carried in a car to a patient's home, making dental care possible for persons who are unable to go to a dentist's office.

The unit, which is the first of its kind, was developed especially for Jewish Hospital's Dental Care Demonstration Project.

Candystripers Are Out In Force



FIRST GROUP OF MORE THAN 150 CANDYSTRIPEERS SERVING THE HOSPITAL THIS SUMMER. FRONT ROW, L. TO R., PAM KOLATH; RISA MOLL; HANNAH MIDDLEMAN AND NOEL MESSING. MIDDLE ROW: LINDA EHRLICH; ANNE HILES; CHERYL GOLDBERG; JANE SHERMAN; DIANE GARDEN, CAROL GOLDSTEIN AND POLLY BROWN. IN BACK ROW AUXILIARY VOLUNTEER COMMITTEE CO-CHAIRMEN, MRS. SAMUEL J. FREUND, L., AND MRS. HAROLD LEWIN, R., FLANK MRS. MORDECAI B. BROWN, DIRECTOR OF AUXILIARY SERVICES.

Auxiliary Dessert Set For Oct. 25th

The Jewish Hospital Auxiliary will hold its fall dessert tea at noon, Friday, October 25 at Westwood Country Club.

An original dramatic presentation depicting the 11-year history of the Auxiliary will be given. It is presently being written by two Auxiliary members, Mrs. Arnold Dankner and Mrs. Joseph Frager.

"This will be one of our most inspirational and exciting meetings in years," comments Mrs. Frank P. Wolff, program chairman for the organization.

Two-Week Guest

Mexican Visitor Praises Hospital

The assistant director of Latin America's only course for hospital administrators was a two-week guest of Jewish Hospital recently.

Dr. Guillermo Fajardo was in St. Louis under auspices of the W. K. Kellogg Foundation to study the operation of what he described as "one of the best-run hospitals in the United States."

Dr. Fajardo, a trained internist and holder of a master's degree in hospital administration from University of Minnesota, is on the faculty of the National Autonomous University of Mexico's program in hospital administration. Some 70,000 students are enrolled in the university; ten select students are enrolled in the hospital program.

The ten students are all M.D.s because in Latin America it's the custom that hospitals are run by doctors. "We'd like to have more non-doctors in our program," Dr. Fajardo lamented, "but none has applied."

"The trouble with doctors as hospital administrators is that in Mexico "they practice more medicine than administration," he said.

A program of socialized medicine was begun in Mexico in 1944. About one third of the nation's 30,000,000 population—those under Social Security—is covered by the government program.

Mrs. Mordecai Brown Heads Directors

Mrs. Mordecai Brown has been elected first president of the newly-formed St. Louis area organization of directors of hospital volunteers. Mrs. Brown is Director of Auxiliary Services at the hospital.

Richard Griffin, director of voluntary service at Jefferson Barracks Veterans Hospital, is secretary-treasurer. Mrs. G. M. Weeks of Childrens Hospital and Mrs. H. H. Kelly of Barnes Hospital are chairmen of the bylaws and program committees, respectively.

MD Golfing Foursome Captures Trophy

A Jewish Hospital foursome captured first place hospital trophy in the St. Louis Medical Golf Club's semi-annual tourney May 29 at Crystal Lake Country Club.

Drs. Sam Freund, Sam Schneider, Herman Roodman and Alan Skirball had a combined score of 284, lowest of 11 teams from other St. Louis area hospitals.

Dr. Schneider won a golf cart for the lowest gross score of players over age 50 and Dr. Skirball won a trophy for lowest net of all players. A total of 128 persons entered the competition.

The team trophy, which has been held three times by Jewish Hospital staff members, is on display in the first-floor memorabilia showcase.

6 Students Complete Radiology Course

Six students have completed a two-year course in the hospital's school of radiological technology and will graduate in August.

The graduates include Jewell Beard, Aileen Peters, Dorothy De Berry, Carole Gunn, Patricia Poznanski and William Hoffman.

The names of new students in the school have been announced. They are Jeanne Nevies, Allen Douglas, Clifford Seals, Jr., Cynthia Serenco, Norbert Schumann and Robert Rimel.

2 Psychiatric Grants

Two educational training grants totaling \$129,384, have been awarded to the Division of Adult Psychiatry at Jewish Hospital by the National Institute of Mental Health.

The first grant provides \$29,106 a year for four years to train three first-year and two second-year psychiatry residents.

The second grant of \$12,960 provides two years of psychiatric training for a physician who has been in general practice for more than four years.

Dr. Jack Hasson Named Medical Staff Chairman For St. Louis Arts Council Drive

Dr. Jack Hasson, director of the hospital's department of laboratories, has been named Jewish Hospital physicians' chairman for the current Greater St. Louis Fund for Arts and Education fund-raising campaign.

The drive is St. Louis' first federated campaign for cultural organizations. Conducted by the newly formed Greater St. Louis Arts Council, it replaces individual drives formerly conducted by the St. Louis Symphony Society, KETC (Channel 9), Museum of Science and Natural History, Community Music School, Missouri Botanical (Shaw's) Garden, Mark Twain Summer Institute, Adult Education Council, Little Symphony Concerts and Young Audiences, Inc.

Dr. Hasson is one of 14 hospital group chairmen appointed by Dr. Lauren V.

Ackerman, chairman of the physicians' section and director of surgical pathology at Barnes Hospital. Dr. Ackerman heads one of the six professional sections, the others being architects, engineers, accountants, attorneys, and dentists.

"The entire goal for physicians is \$13,000," Dr. Hasson said, "and contributions are just beginning to come in. Nearly \$2000 has already been raised at Jewish Hospital from 32 physicians. About 140 doctors from other St. Louis area hospitals have contributed more than \$6600."

Helping Dr. Hasson solicit funds at Jewish Hospital are Drs. Sidney Jick, Carl Heifetz, Seymour Monat, Benjamin Cohen, M. Norman Orgel, Gilbert Lassar, Daniel Rosenstein, Julius Elson, Robert Karsh, Burton Shatz, Melvin Kirstein, S. A. Weintraub and Bernard De Hovitz.

Medical Staff

Dr. Samuel Soule spoke recently at a meeting of the American Academy of Dental Medicine . . . Dr. Sherman J. LeMaster is secretary of the St. Louis chapter, American Academy of Dental Medicine . . . Dr. Alexander Sonnenwirth will lecture at SIU's summer institute on biology on the subject "Microbial-Ecology in Man". He lectured recently to the Jefferson Barracks VA Hospital and the Missouri Pacific Hospital medical staffs . . . Dr. Arnold S. Block spoke on "The Family in an Automated Society" at the Indianapolis (Ind.) Social Workers Club in April.

Dr. Donald Dickler addressed the Homer G. Phillips Hospital medical staff alumni on "Considerations in the Choice of Anesthesia." . . . "An Attempt at Differentiation Between Casework and Psychotherapy" was Dr. Alex K. Kaplan's lecture subject at the annual meeting of the American Psychiatric Association . . . Dr. Carl J. Heifetz was a co-author of "Observations on the Disappearance of Umbilical Hernias of Infancy and Childhood" in the April *Surgery, Gynecology and Obstetrics* . . . Dr. Sydney Goldenberg spoke on "Practical Management of Nursing Homes" at a post-graduate symposium of the University of Minnesota Continuation Center in Minneapolis . . . Dr. B. Y. Glassberg will teach a course on marriage and the family at the summer session of the St. Louis-St. Louis County Junior College District; in August he will chair the counseling section of the National Council on Family Relations at its Denver meeting . . . Dr. Calvin H. Weiss, spoke on "Dental Care for Chronically Ill, Aged and Handicapped Patients" at a meeting of the dental section, Missouri Public Health Association . . . Dr. Joseph B. Kendis spoke at a meeting on alcoholism recently in Eau Claire, Wis.

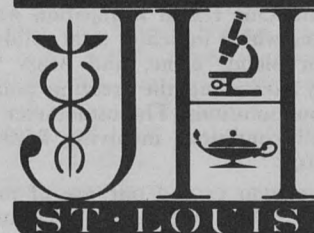
Dr. Stanley Lang was a co-author of the paper, "Propylthiouracil and Hepatic Clearance of Thyroid Hormones" in a recent *American Journal of Physiology* . . . Dr. Alvin R. Frank, along with Mrs. Audrey G. Senturia, presented a paper, "A Design for Small Groups in a Therapeutic Community" at the annual meeting of the American Psychiatric Association . . . Dr. Virgil Loeb, Jr. spoke on "Clinical Evaluation of Dihydroxybusulfan in Human Malignancies" at the annual meeting of the American Association for Cancer Research in Toronto, Canada . . . Dr. Falls B. Hershey was co-author of "Autogenous Vein Grafts for Repair of Arterial Injuries" in the May *Archives of Surgery*.

Dr. Mary Bishop was subject of a personal profile in the 1963 Mary Institute Alumni magazine . . . Dr. William Shieber recently talked on "Lymphography in Surgical Practice" at Ellis Fischel Cancer Hospital, Columbia . . . Dr. Herman W. Reas' article, "The Effect of N-acetylcysteine on the Viscosity of Tracheobronchial Secretions in Cystic Fibrosis of the Pancreas," appeared in a recent *Journal of Pediatrics*. He spoke on the same subject at the American Pediatric Society annual meeting in Atlantic City last month . . . Dr. Morton D. Pereira wrote a chapter on nutritional problems in surgical patients in the new book, *Body Fluid Disturbances* . . . Dr. Daniel Klaff will help put on a post-graduate course in nasal surgery at University of Leyden, The Netherlands, from July 14 to 27, under auspices of the American Rhinologic Society.

216

THE JEWISH HOSPITAL OF ST. LOUIS

JEWISH HOSPITAL



ST. LOUIS

216 S. KINGSHIGHWAY, ST. LOUIS, MO, 63110

Non-Profit Organization
U. S. POSTAGE
PAID
ST. LOUIS, MO.
PERMIT NO. 2376

Delete

ALINE W. BERNIS
216 S. KINGSHIGHWAY
ST. LOUIS 10, MO.

Form 3547 Requested